



江苏吴通通讯股份有限公司
Jiangsu Wutong Communications Co., Ltd.

苏州市相城区黄桥街道永方路32号 邮编: 215132
Huangqiao Industrial Park, Xiangcheng District,
Suzhou City, Jiangsu Province, PRC 215132
Tel: +86-512-82285058 Fax: +86-512-65461778
E-mail: wt@jswutong.com <http://www.jswutong.com>

上海宽翼通信科技有限公司
Shanghai Broadmobi Communication Technology Co., Ltd.

上海市徐汇区田州路99号凤凰园9号楼15F 邮编: 200233
Floor15, Building9, Phoenix Garden, No.99, Tianzhou Rd,
Xuhui District, Shanghai, P.R.China. 200233
Tel: +86-021-60913308 Fax: +86-021-60913308-818
E-mail: Service@broadmobi.com <http://www.broadmobi.com>

苏州市吴通光电科技有限公司
Suzhou Wutong Optic-electric Co., Ltd.

苏州市相城区黄桥街道永方路32号 邮编: 215132
Huangqiao Industrial Park, Xiangcheng District,
Suzhou City, Jiangsu Province, PRC 215132
Tel: +86-512-82285051 Fax: +86-512-82285055
E-mail: hankui@jswutong.com <http://www.jswutong.com>

苏州市吴通天线有限公司
Suzhou Wutong Antenna Co., Ltd.

苏州市相城区黄桥街道永方路32号 邮编: 215132
Huangqiao Industrial Park, Xiangcheng District,
Suzhou City, Jiangsu Province, PRC 215132
Tel: +86-512-82285058 Fax: +86-512-82285036
E-mail: txzhh@jswutong.com <http://www.jswutong.com>

江苏风雷光电科技有限公司
Jiangsu Foulen Optic-electric Co., Ltd.

苏州市相城区黄桥街道永方路32号 邮编: 215132
Huangqiao Industrial Park, Xiangcheng District,
Suzhou City, Jiangsu Province, PRC 215132
Tel: +86-512-82285058-8041 Fax: +86-512-82285034
E-mail: wttp@jswutong.com

Wutong Tele Communications India Private Limited
C 54, Golf View Apartments, Saket, New Delhi 110017 India
Tel: 919811522204
E-mail: Vkt@jswutong.com
<http://companiesindia.com/jswutong>

PRODUCT GUIDE

产品目录



连接有我 沟通无限

Infinite Communication And Link Between You And Me



企业介绍

江苏吴通通讯股份有限公司成立于1999年6月22日，位于江苏省苏州市相城区永方路32号，注册资本17544.264万元。

公司是一家专注于通信领域连接技术的高新技术企业，专业从事无线通信射频连接系统、光纤连接产品的研发、生产及销售，是国内领先的通信射频连接系统专业供应商。公司主要产品分为面向射频、光纤连接领域的通信连接产品和移动通信终端设备产品两大类。

无线通信射频连接系统产品主要包括射频同轴连接器、射频同轴转接器、射频线路避雷连接器、射频同轴电缆及组件、射频终端负载等互连器件，以及相关的连接结构件等。

公司于2012年2月29日在深圳证券交易所创业板上市，股票代码300292。公司下设苏州市吴通天线有限公司、苏州市吴通光电科技有限公司、江苏风雷光电科技有限公司、吴通通讯印度有限公司、上海宽翼通信科技有限公司及北京国都互联科技有限公司等六家子公司。

公司是中国通信标准化协会、中国电子元件行业协会的会员单位，是省高新技术企业、省管理创新优秀企业。“吴通”被评为中国驰名商标，多款产品获得省高新技术产品称号。公司通过了ISO 9001：2008质量管理体系、ISO14001：2004环境管理体系和OHSAS18001：2007职业健康安全管理体系认证。公司建立了江苏省射频微波器件工程技术研究中心、江苏省企业技术中心和江苏省博士后创新实践基地，并与南京邮电大学、北京邮电大学建立了产学研合作。

公司始终坚持“以人为本，科技创新”的管理理念，以敏捷管理模式提高企业快速反应能力，持续改进质量管理的有效性，运用ERP信息管理系统为客户提供一流的产品和服务，为客户创造最大价值，将“吴通”打造成为一流的通信连接及通信应用产品、服务及系统解决方案核心供应商。

COMPANY PROFILE

Jiangsu Wutong Communications Co., Ltd, established on June 22nd, 1999, is located at 32 Yongfang Road, Xiangcheng district of Suzhou, Jiangsu province, with a registered capital of 175,442,640RMB.

The company is a high and new technology enterprise focused on connection technology in the field of communications, and the domestic leading professional supplier of communication RF connection system, specialized in R&D, production and sales of wireless communication RF connection system and fiber connection products. Company products are mainly divided into two categories: communication connection products for RF& fiber connection fields, and mobile communication terminal devices.

Wireless communication RF connection system products mainly include RF coaxial connectors, adaptors, surge arrestors, cables and cable assemblies, interconnect devices like terminal loads, as well as relevant connection structure parts.

The company was listed on the Shenzhen Stock Exchange GEM(growth enterprise market) on February 29, 2012, and the stock code is 300292. The company has the following 6 affiliated companies: Suzhou City Wutong Antenna Co., Ltd, Suzhou City Wutong Optoelectronics Technology Co. Ltd, Jiangsu Fenglei Optoelectronics Technology Co, Ltd, Wutong Telecommunications India Pvt. Ltd, BroadMobi Shanghai, and Guodo Internet Beijing Technology Co., Ltd.

The Company is the member of CCSA, China TD Industry

Federation and China Electronic Components Association. It is Jiangsu Province New High-Tech Enterprise and Jiangsu Province Management Innovation Outstanding Enterprise. "Wutong" has been rated as China Famous Brand, and a variety of products have been awarded the title of "Provincial New and High-Tech Products". The company passed the ISO 9001: 2008 Quality Management System, ISO14001: 2004 Environmental Management System and OHSAS18001: 2007 Occupational Health and Safety Management System certifications. The company established a Radio Frequency Microwave Devices Engineering Research Center of Jiangsu Province, Jiangsu Province Enterprise Technology Center and Jiangsu Province Postdoctoral Innovative Practice Base, and has established university-industry collaboration with Nanjing Post and Communications University and BUPT (Beijing University of Posts and Telecommunications).

The company always adheres to the management philosophy of "people-oriented, technological innovation", and adopts agile management to improve rapid response capabilities of company; continually improve the effectiveness of quality management, use ERP information management system to provide customers with the best products and services; and create maximum value for customers. We will try best to make "Wutong" the core supplier of first-class communication connection and application products, services and system solutions.



1999



2008



2010



2012



2013



2014



2015



- 苏州市吴通通讯器材有限公司成立

- 苏州市吴通天线有限公司成立

- 苏州市吴通通讯器材有限公司改为江苏吴通通讯股份有限公司
- 苏州市吴通光电科技有限公司成立

- 公司在深圳证券交易所创业板上市
- “吴通”被评为中国驰名商标

- 并购上海宽翼通信科技有限公司

- 江苏风雷光电科技有限公司成立
- 吴通通讯印度有限公司成立
- 并购北京国都互联科技有限公司

技术中心

公司于2012年建立了技术中心，设立了射频连接器、射频微波无源器件、天线、光电器件等4个研发室，获江苏省科技厅、经信委、人社厅的批准成立了江苏省射频微波器件工程技术研究中心、江苏省企业技术中心和江苏省博士后创新实践基地（即博士后工作站）。公司技术中心建立了规范化的项目产品开发管理制度，运用ERP系统进行电子化的流程管理。研发用地约2000平方米，研发团队70多人，其中享受国家政府津贴高级专家1人、教授3人、在站博士后2人、博士2人、硕士4人、本科及大专约60人。高级研发人员有10年以上、中级研发人员有5年以上的产品开发经验，且多人承担过国家、省、市、区级科技项目，具有很强的项目管理和产品开发能力。

公司与南京邮电大学、北京邮电大学建立了产学研基地和联合研究中心，开展物联网、射频微波、光纤通信等方面的技术联合研究。与南京航空航天大学开展博士后课题合作，进行射频同轴连接器关键技术和微波无源器件关键技术的研究及其产业化。通过政府搭桥，与清华大学开展合作，成为清华大学博士研究生暑期社会实践基地。与电子集团第40研究所开展技术合作，进行电接插件（包括射频同轴连接器）的技术开发和指导。与中科院半导体研究所开展技术合作，重点从事光模块和可见光通信的产品开发。

TECHNIQUE CENTER

The company established technology center in 2012, under which there are such 4 R&D rooms as RF connector, RF microwave passive device, antenna, and photoelectric device R&D room. Furthermore, with the permission by Jiangsu Province Science and Technology Department, Jiangsu Province Economic and Informatization Committee, Jiangsu Province Human Resources and Social Security Department, the company has set up Jiangsu Province RF Microwave Device Project Technology Center, Jiangsu Province Enterprise Technology Center and Jiangsu Province Postdoctoral Innovative Practice Base (i.e. postdoctoral workstation). The company's technology center has established a standardized project product development management system, which uses ERP system for electronic process management. Research and development purposed land covers about 2000 square meters, and R & D team has more than 70 people, including one senior expert qualified for state government subsidies, three professors, two post-doctors, two doctors, four masters, 60 people with four-year university or junior college diplomas. Senior R & D staff have more than 10 years of experiences, mid-level R & D personnel have over 5 years experiences in product development, and several people have the experience of undertaking national, provincial, municipal and district-level science and technology projects, with strong project management and product development capabilities.

The company has established university-industry collaboration and Joint Research Center with Nanjing Post and Communications University and BUPT (Beijing University of Posts and Telecommunications) which has carried out the joint research on Internet of things, RF and microwave, optical fiber communication and other technologies. The company has cooperated with Nanjing Post and Communications University on post-doctoral programs, such as radio frequency coaxial connectors and microwave passive components key technologies research and industrialization. Through the introduction by the government, the company has made cooperation with Tsinghua University, and made itself a summer vacation time social practice base for Tsinghua University doctoral candidates. The company carried out technical cooperation with The 40th Institute of China Electronics Technology Corporation (40th Institute, for short) for the technological development of electrical connector (including Radio frequency coaxial connectors), cooperated with Institute of Semiconductors, Chinese Academy of Sciences for technical cooperation, with the focus on optical module and visible light communication product development.



资质荣誉

荣誉是肯定，是信任，更是企业生命延续的动力。吴通从改革开放的大潮中脱颖而出，一路走来，凭借自己的勤勉与创新，不断创造出一个个骄人的业绩，得到社会的普遍认可。

专利 PATENT

- ① 一种低交调射频同轴连接器的连接结构
- ② 一种多用途防护型电缆连接器
- ③ 一种直接式防护型电缆连接器
- ④ 实用新型-GSM&DCS-TDA&TDF&TDE多频合路器
- ⑤ 实用新型-隔直流、抑制电磁干扰的射频同轴连接器
- ⑥ 实用新型-可调角度的转接器外导体结构
- ⑦ 实用新型-快插式微型超高频同轴负载
- ⑧ 实用新型-新型射频同轴连接器界面结构



产品认证 CERTIFICATION

- ① ISO9001:2008质量管理体系认证
- ② ISO9001:2004环境管理体系认证
- ③ 职业健康安全管理体系认证
- ④ 资信等级AAA级证书
- ⑤ 安全生产标准化证书
- ⑥ 计量合格确认证书
- ⑦ 企业境外投资证书
- ⑧ 国家强制性产品认证证书



QUALIFICATION & HONORS

Honor is recognition and trust, and it is the driving force for the continuation of life. Wutong has stood out from others in the tide of reform and opening-up, and forged ahead, by virtue of their diligence and innovation; it has created one impressive achievement after another, and has been universally recognized by society.

企业荣誉 HONOR

- ① 中国驰名商标
- ② 江苏省高新技术企业
- ③ 江苏省管理创新优秀企业
- ④ 江苏省企业技术中心
- ⑤ 江苏省工程技术研究中心
- ⑥ 苏州市质量奖
- ⑦ 中国电子元件百强企业
- ⑧ 江苏省博士后创新实践基地
- ⑨ 江苏省科技型中小企业
- ⑩ 江苏省著名商标



中国驰名商标
中国电子元件百强企业
质量管理体系认证
环境管理体系认证
江苏省博士后创新实践基地
江苏省创新型企业

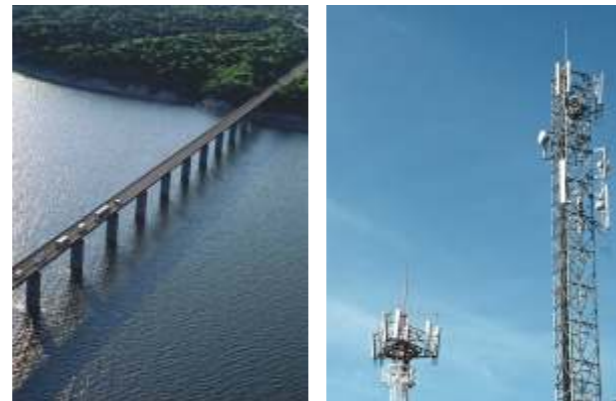
RF Coaxial Connectors



Connectors Precision

连接有我 沟通无限
Infinite Communication And Link Between You And Me

Cable- Assembly



Attachment

TABLE OF CONTENTS

A.	RF Coaxial Connectors	射频同轴连接器
A.1	3 7/16 Type Coaxial Connectors	7/16型连接器
A.2	11 S7/16 Type Coaxial Connectors	S7/16型连接器
A.3	15 N Type Coaxial Connectors	N型连接器
A.4	25 TNC Type Coaxial Connectors	TNC型连接器
A.5	29 BNC Type Coaxial Connectors	BNC型连接器
A.6	32 1.6/5.6 Type Coaxial Connectors	1.6/5.6型连接器
A.7	35 SMA Type Coaxial Connectors	SMA型连接器
A.8	40 SMB Type Coaxial Connectors	SMB型连接器
A.9	43 SMC Type Coaxial Connectors	SMC型连接器
A.10	46 MCX Type Coaxial Connectors	MCX型连接器
A.11	50 BMA Type Coaxial Connectors	BMA型连接器
A.12	53 SMP Type Coaxial Connectors	SMP型连接器
A.13	57 1.0/2.3 Type Coaxial Connectors	1.0/2.3型连接器
A.14	60 Adaptors	转接器
A.15	66 Surge Arrestors	避雷器
B.	Precision Connector	测试级连接器
B.1	71 N Precision Connector	N型测试级连接器
B.2	75 3.5mm Precision Connector	3.5mm型测试级连接器
B.3	79 2.92mm Precision Connector	2.92mm型测试级连接器
B.4	82 Adaptors	测试级转接器
C.	Cable-Assembly	电缆组件
C.1	87 Corrugated Cable Assembly	波纹管跳线
C.2	89 Flexible Cable Assembly	柔性电缆组件
C.3	91 Semi-flexible/Semi-rigid Cable Assembly	半柔/半刚电缆组件
C.4	95 Testing Cable Assembly	测试级电缆组件
D.	Attachment	附件
D.1	99 Feeder Window	馈线窗
D.2	101 Feeder Card	馈线卡
D.3	105 Feeder Grounding	馈线接地卡
D.4	109 Ground Copper Bar	接地铜排
D.5	110 Arrester Bracket	避雷器支架

RF Coaxial Connectors 射频同轴连接器

射频同轴连接器，广泛的产品组合使您选择出理想的连接器配置，来满足绝大部分的应用要求，诸如医疗设备、测量和检测仪器、机械设备、音像广播、电信和军工等。

为客户量身定制适合其独特应用需求的连接器，我们将提供高品质的连接器，为客户提供整套连接解决方案。

RF coaxial connectors, broad product portfolio allows you to select the ideal connector configuration to meet the majority, such as medical equipment, measuring and testing equipment, mechanical equipment, audio and video broadcasting, telecommunications and military. We will customize connectors for their unique application needs, we will provide high quality connectors for our customers to provide complete connector solutions.

A. RF Coaxial Connectors 射频同轴连接器

A.1	3	7/16 Type Coaxial Connectors	7/16型连接器
A.2	11	S7/16 Type Coaxial Connectors	S7/16型连接器
A.3	15	N Type Coaxial Connectors	N型连接器
A.4	25	TNC Type Coaxial Connectors	TNC型连接器
A.5	29	BNC Type Coaxial Connectors	BNC型连接器
A.6	32	1.6/5.6 Type Coaxial Connectors	1.6/5.6型连接器
A.7	35	SMA Type Coaxial Connectors	SMA型连接器
A.8	40	SMB Type Coaxial Connectors	SMB型连接器
A.9	43	SMC Type Coaxial Connectors	SMC型连接器
A.10	46	MCX Type Coaxial Connectors	MCX型连接器
A.11	50	BMA Type Coaxial Connectors	BMA型连接器
A.12	53	SMP Type Coaxial Connectors	SMP型连接器
A.13	57	1.0/2.3 Type Coaxial Connectors	1.0/2.3型连接器
A.14	60	Adaptors	转接器
A.15	66	Surge Arrestors	避雷器

7/16 RF Coaxial Connectors

射频同轴连接器

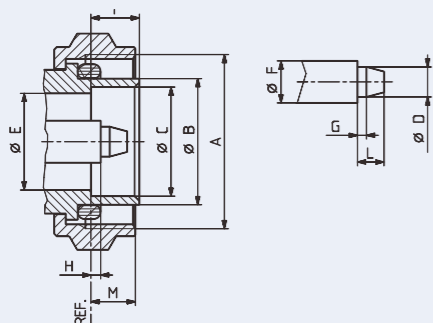
7/16 (L29) 型是一种结构可靠且性能极其稳定的连接器，一般具有防水性能和螺纹锁紧结构，适用于类似无线通信基站的大功率、户外应用。独特的结构设计保证了信号传输的低互调和低衰减。

7/16 (L29) type is a connector with reliable structure and its performance is extremely stable, it is generally water-resistant and thread locking structured, applicable to such high-power outdoor applications as wireless communication base station. The unique structural design ensures low intermodulation and low attenuation in signal transmission.

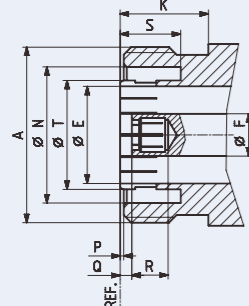
界面尺寸配合

Interface Mating Dimensions

插针连接器
Pin Connector



插孔连接器
Socket Connector



	PLUG(mm/inch)		JACK(mm/inch)	
	最小值	最大值	最小值	最大值
A	M29X1.5		M29X1.5	
B	20.60/.811	21.40/.843	—	—
C	18.03/.710	18.21/.717	—	—
D	4.96/.195	5.04/.198	—	—
E	15.85/.624	16.25/.640	15.85/.624	16.25/.640
F	7.00/.276nom.		7.00/.276nom.	
G	1.40/.055	1.60/.063	—	—
H	1.47/.058	1.77/.070	—	—
I	7.00/.276	8.00/.315	—	—
K	—	—	10.00/.394	—
L	—	4.50/.177	—	—
M	7.00/.276	9.00/.354	—	—
N	—	—	22.10/.870	22.90/.902
P	—	—	0.50/.020	0.70/.028
Q	—	—	1.77/.070	2.07/.082
R	—	—	5.00/.197	—
S	—	—	8.10/.319	—
T	—	—	—	18.50/.728*
U	—	—	—	18.00/.709

技术参数

Technical Data

适用标准	Applicable Standards	
界面尺寸	Interface According To	IEC 60169-4 GB 11313-4
电气性能	Electrical Data	
阻抗	Impedance	50 Ω
频率范围	Frequency Range	DC to 7.5 GHz
驻波比 (直式)	VSWR(Straight)	1.10 (DC to 3 GHz)
驻波比 (弯式)	VSWR(Right Angle)	1.15 (DC to 3 GHz)
插入损耗	Insertion Loss	≤ 0.05 √f(GHz) dB
绝缘电阻	Insulation Resistance	≥ 10000 MΩ
内导体接触电阻	Center Contact Resistance	≤ 0.4 mΩ
外导体接触电阻	Out Contact Resistance	≤ 1.5 mΩ
测试电压	Test Voltage	4000 V
三阶互调	PIM(3 rd order)	≤ -165 dBc @ 2 × 20 W
机械性能	Mechanical Data	
插拔次数	Mating Cycles	≥ 500
结合扭矩	Coupling Torque	Max 35 Nm
建议结合扭矩	Recommended Coupling Torque	25-30 Nm
螺母保持力	Coupling Nut Retention	≥ 1000 N
内导体保持力	Center Contact Captivation	Axial: ≥ 200 N Radial: ≥ 2 Ncm
环境性能	Environmental Data	
温度范围	Temperature Range	-55 °C - +155 °C
盐雾	Salt Mist	IEC 61169 Clause 9.4.6
气候试验	Climatic Test	IEC 61169-1 55/155/56
振动	Vibrations	IEC 61169 Clause 15.2.2
防护等级	Degree Of Protection	IEC 60529 IP68
材料	Materials	
外导体	Outer Contact	Brass CuSnZn Plating
内导体	Center Contact	Brass Ag Plating
弹性接触件	Spring Loaded Contact Parts	Bronze Ag Plating
绝缘体	Dielectric	PTFE
压接管	Crimping Ferrule	Copper Alloy CuSnZn Plating
垫片	Gasket	Rubber

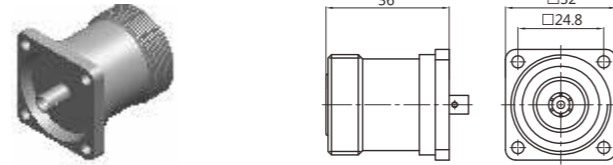
7/16 RF Coaxial Connectors

射频同轴连接器

S7/16

N

Product No.	Cable Group	Plt	Imp
产品型号	适配电缆	镀层	阻抗
7/16-H-FL-RG141	RG141	CuSnZn	50Ω

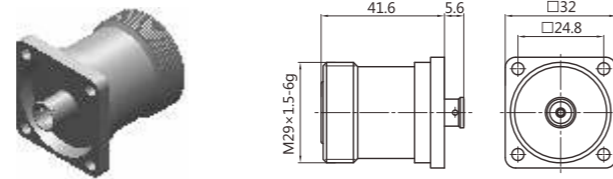


A.1-1

BNC

1.6/5.6

Product No.	Cable Group	Plt	Imp
产品型号	适配电缆	镀层	阻抗
7/16F-H/FL-250	RG250	CuSnZn	50Ω



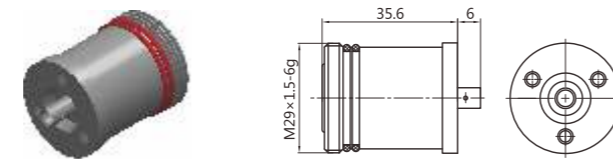
A.1-2

SMA

SMB

SMC

Product No.	Cable Group	Plt	Imp
产品型号	适配电缆	镀层	阻抗
7/16F-FL-141	RG141	CuSnZn	50Ω



A.1-3

MCX

BMA

Product No.	Cable Group	Plt	Imp
产品型号	适配电缆	镀层	阻抗
7/16F-YD12	1/2"	CuSnZn	50Ω



A.1-4

SMP

1.0/2.3

ADAPTORS

SURGE
ARRESTORS

Product No.	Cable Group	Plt	Imp
产品型号	适配电缆	镀层	阻抗
7/16M-YD12	1/2"	CuSnZn	50Ω



A.1-5

Product No.	Cable Group	Plt	Imp
产品型号	适配电缆	镀层	阻抗
7/16F-YD32	5/4"	CuSnZn	50Ω



A.1-6

Product No.	Cable Group	Plt	Imp
产品型号	适配电缆	镀层	阻抗
7/16M-YD32	5/4"	CuSnZn	50Ω



A.1-7

Product No.	Cable Group	Plt	Imp
产品型号	适配电缆	镀层	阻抗
7/16F-1-5/8	13/8"	CuSnZn	50Ω

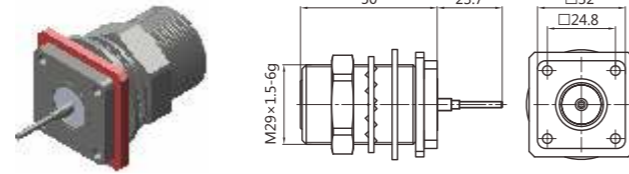


A.1-8

7/16 RF Coaxial Connectors

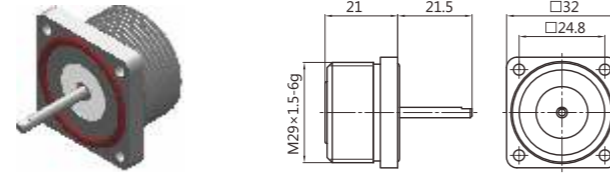
射频同轴连接器

Product No.	Cable Group	Plt	Imp
产品型号	适配电缆	镀层	阻抗
7/16F-F-D01	N/A	CuSnZn	50Ω



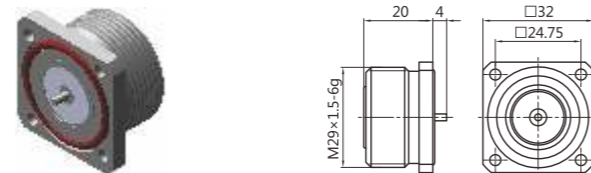
A.1-9

Product No.	Cable Group	Plt	Imp
产品型号	适配电缆	镀层	阻抗
7/16F-F-D02	N/A	CuSnZn	50Ω



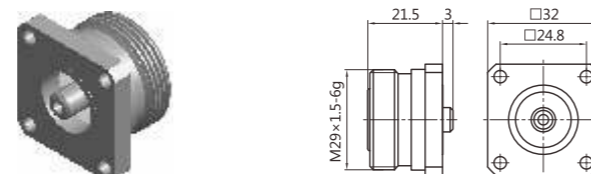
A.1-10

Product No.	Cable Group	Plt	Imp
产品型号	适配电缆	镀层	阻抗
7/16F-F-D03	N/A	CuSnZn	50Ω



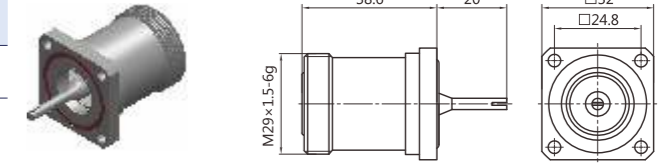
A.1-11

Product No.	Cable Group	Plt	Imp
产品型号	适配电缆	镀层	阻抗
7/16F-F-D04	N/A	CuSnZn	50Ω



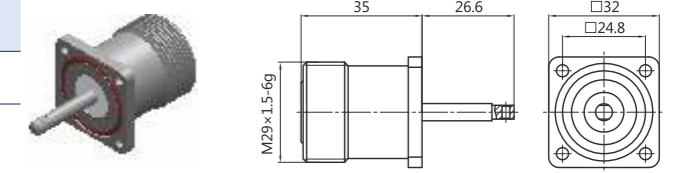
A.1-12

Product No.	Cable Group	Plt	Imp
产品型号	适配电缆	镀层	阻抗
7/16F-F-D05	N/A	CuSnZn	50Ω



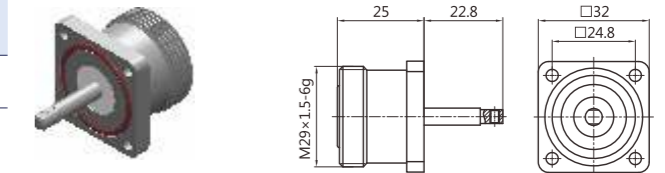
A.1-13

Product No.	Cable Group	Plt	Imp
产品型号	适配电缆	镀层	阻抗
7/16F-F-D06	N/A	CuSnZn	50Ω



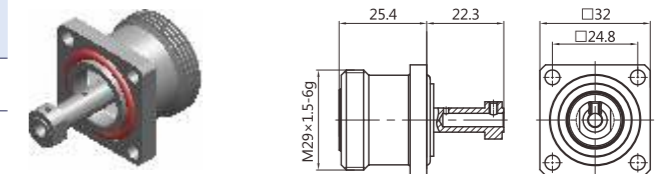
A.1-14

Product No.	Cable Group	Plt	Imp
产品型号	适配电缆	镀层	阻抗
7/16F-F-D07	N/A	CuSnZn	50Ω



A.1-15

Product No.	Cable Group	Plt	Imp
产品型号	适配电缆	镀层	阻抗
7/16F-F-D08	N/A	CuSnZn	50Ω



A.1-16

S7/16

N

TNC

BNC

1.6/5.6

SMA

SMB

SMC

MCX

BMA

SMP

1.0/2.3

ADAPTORS

SURGE
ARRESTORS

7/16

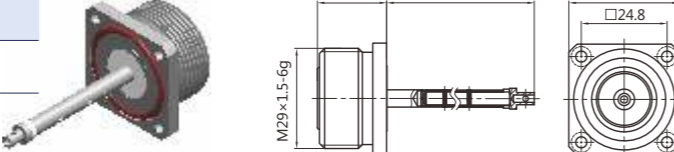
7/16 RF Coaxial Connectors

射频同轴连接器

S7/16

N

Product No.	Cable Group	Plt	Imp
产品型号	适配电缆	镀层	阻抗
7/16F-F-D09	N/A	CuSnZn	50Ω



A.1-17

BNC

1.6/5.6

Product No.	Cable Group	Plt	Imp
产品型号	适配电缆	镀层	阻抗
7/16F-F-D10	N/A	CuSnZn	50Ω



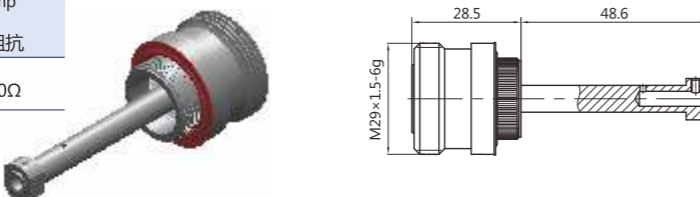
A.1-18

SMA

SMB

SMC

Product No.	Cable Group	Plt	Imp
产品型号	适配电缆	镀层	阻抗
7/16F-F-D11	N/A	CuSnZn	50Ω



A.1-19

MCX

BMA

Product No.	Cable Group	Plt	Imp
产品型号	适配电缆	镀层	阻抗
7/16F-F-D12	N/A	CuSnZn	50Ω



A.1-20

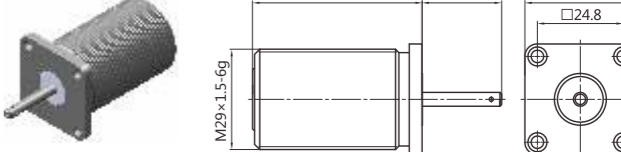
1.0/2.3

ADAPTORS

SURGE
ARRESTORS

09

Product No.	Cable Group	Plt	Imp
产品型号	适配电缆	镀层	阻抗
7/16F-F-D13	N/A	CuSnZn	50Ω




A.1-21

Product No.	Cable Group	Plt	Imp
产品型号	适配电缆	镀层	阻抗
7/16F-F-D14	N/A	CuSnZn	50Ω



A.1-22

Product No.	Cable Group	Plt	Imp
产品型号	适配电缆	镀层	阻抗
7/16F-BHD FL-1/4S	1/4"S	CuSnZn	50Ω



A.1-23

10 Tel: +86-512-82285058, Fax: +86-512-65461778, www.jswtong.com

S7/16 RF Coaxial Connectors

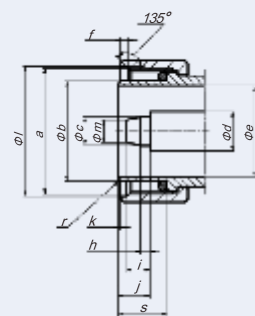
射频同轴连接器

S7/16型是一种基于7/16型产品而发展的射频同轴连接器，S7/16型连接器拥有小型化的尺寸和优异的性能，其继承了7/16型可靠的结构和稳定的性能，适用于类似无线通信基站的大功率、户外应用。独特的结构设计保证了信号传输的低互调和低衰减。

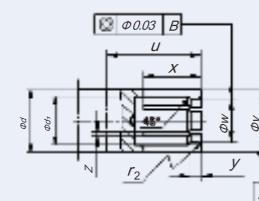
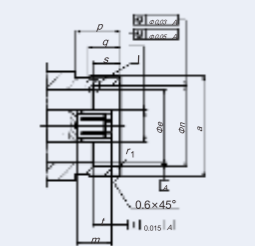
S7/16-type is a RF coaxial connector based on and developed from 7/16 type product, S7/16-type connector has a compact size and excellent performance, which inherited the 7/16 type product's reliable structure and stable performance, applicable to such high-power outdoor applications as wireless communication base station. The unique structural design ensures low intermodulation and low attenuation in signal transmission.

界面尺寸配合 Interface Mating Dimensions

插针连接器
Pin Connector



插孔连接器
Socket Connector



PLUG(mm/inch)		JACK(mm/inch)	
最小值	最大值	最小值	最大值
a	M22X1	a	M22X1
b	17,87 18,03	d	6,971 6,981
c	4,80 4,86	d1	5,000 5,500
d	7 nominal	e	16,050 16,070
e	16,02 16,08	n	18,080 18,100
f	1,00 1,05	p	9,500 —
h	1,80 1,20	q	7,500 —
i	4,20 4,50	s	6,700 7,000
j	5,20 5,50	t	5,170 5,200
s	7,80 —	m	5,000 —
k	0,00 1,00	u	7,200 7,400
l	22,05 22,35	v	6,997 7,003
m	— 3,70	w	— —
r	0,12 0,30	z	0,200 0,300
—	—	r1	0,20 0,35
—	—	r2	0,20 0,35

技术参数

Technical Data

适用标准	Applicable Standards	
界面尺寸	Interface According To	IEC 60169-53
电气性能	Electrical Data	
阻抗	Impedance	50 Ω
频率范围	Frequency Range	DC to 7.5 GHz
驻波比(直式)	VSWR(Straight)	1.10 (DC to 3 GHz)
驻波比(弯式)	VSWR(Right Angle)	1.15 (DC to 3 GHz)
插入损耗	Insertion Loss	≤ 0.05 √f(GHz) dB
绝缘电阻	Insulation Resistance	≥ 10000 MΩ
内导体接触电阻	Center Contact Resistance	≤ 0.4 mΩ
外导体接触电阻	Out Contact Resistance	≤ 0.2 mΩ
测试电压	Test Voltage	4000 V
三阶互调	PIM(3 rd order)	≤ -165 dBc @ 2 × 20 W
机械性能	Mechanical Data	
插拔次数	Mating Cycles	≥ 500
结合扭矩	Coupling Torque	Max 35 Nm
建议结合扭矩	Recommended Coupling Torque	25-30 Nm
螺母保持力	Coupling Nut Retention	≥ 1000 N
内导体保持力	Center Contact Captivation	Axial: ≥ 200 N Radial: ≥ 2 Ncm
环境性能	Environmental Data	
温度范围	Temperature Range	-55 °C - +155 °C
盐雾	Salt Mist	IEC 61169 Clause 9.4.6
气候试验	Climatic Test	IEC 61169-1 55/155/56
振动	Vibrations	IEC 61169 Clause 15.2.2
防护等级	Degree Of Protection	IEC 60529 IP68
材料	Materials	
外导体	Outer Contact	Brass CuSnZn Plating
内导体	Center Contact	Brass Ag Plating
弹性接触件	Spring Loaded Contact Parts	Bronze Ag Plating
绝缘体	Dielectric	PTFE
压接管	Crimping Ferrule	Copper Alloy CuSnZn Plating
垫片	Gasket	Rubber

7/16

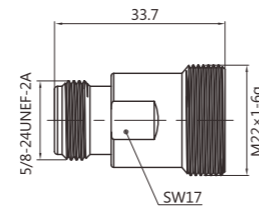
S7/16 RF Coaxial Connectors

射频同轴连接器

S7/16

N

Product No.	Cable Group	Plt	Imp
产品型号	适配电缆	镀层	阻抗
NF-S7-16F	N/A	CuSnZn	50Ω



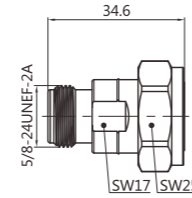
A.2-1

TNC

BNC

1.6/5.6

Product No.	Cable Group	Plt	Imp
产品型号	适配电缆	镀层	阻抗
NF-S7-16M	N/A	CuSnZn	50Ω



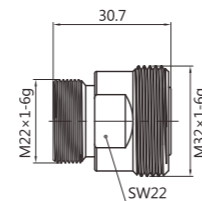
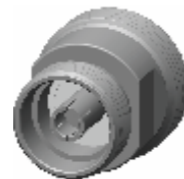
A.2-2

SMA

SMB

SMC

Product No.	Cable Group	Plt	Imp
产品型号	适配电缆	镀层	阻抗
S7-16-7-16	N/A	CuSnZn	50Ω



A.2-3

MCX

BMA

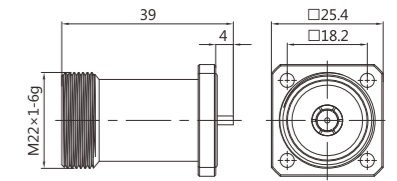
SMP

1.0/2.3

ADAPTORS

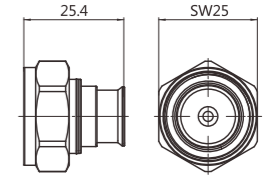
SURGE
ARRESTORS

Product No.	Cable Group	Plt	Imp
产品型号	适配电缆	镀层	阻抗
S7-16F-F-D	N/A	CuSnZn	50Ω



A.2-4

Product No.	Cable Group	Plt	Imp
产品型号	适配电缆	镀层	阻抗
S7-16M-YD9	1/2"S	CuSnZn	50Ω



A.2-5

7/16

S7/16

N

TNC

BNC

1.6/5.6

SMA

SMB

SMC

MCX

BMA

SMP

1.0/2.3

ADAPTORS

SURGE
ARRESTORS

N RF Coaxial Connectors

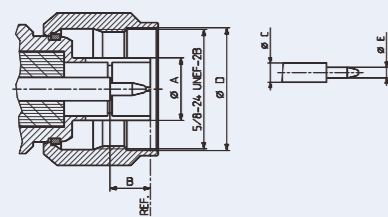
射频同轴连接器

N型产品是一种螺纹连接的中小功率连接器，特性阻抗为50Ω和75Ω两种。他们具有可靠性高、抗震性强、机械和电气性能优良等特点。广泛应用于振动和恶劣环境下的无线电仪器、通讯设备、微波测试及地面发射系统连接RF同轴电缆。使用高精度的半刚半柔电缆，频率可达11GHz，并获得较小的电压驻波比。

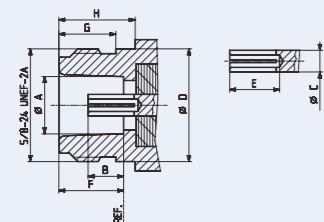
N-type is a middle and small power connector with threaded connection, whose characteristic impedance can be classified into 50Ω and 75Ω two kinds. They have high reliability, shock resistance, excellent mechanical and electrical performance characteristics. It is widely used in radio equipment, communications equipment, microwave test and ground launch system connector RF coaxial cable in vibration and harsh environment. It uses high-precision semi-rigid semi-flexible cable, whose frequency can go up to 11GHz, and get smaller voltage standing wave ratio.

界面尺寸配合 Interface Mating Dimensions

插针连接器
Pin Connector



插孔连接器
Socket Connector



	PLUG(mm/inch)		JACK(mm/inch)	
	最小值	最大值	最小值	最大值
A	—	8.38/.330	8.03/.316	8.13/.320
B	5.33/.210	5.84/.230	4.75/.187	5.26/.207
C	3.04 nominal		3.04 nominal	
D	16.00/.630	—	—	15.93/.627
E	1.60/.063	1.68/.066	5.33/.210	—
F	—	—	9.04/.356	9.19/.362
G	—	—	6.76/.266	—
H	—	—	10.72/.422	—

技术参数

Technical Data

适用标准	Applicable Standards	
界面尺寸	Interface According To	IEC 60169-16 GB/T 11313-16
电气性能	Electrical Data	
阻抗	Impedance	50 Ω
频率范围	Frequency Range	DC to 11 GHz
驻波比(直式)	VSWR(Straight)	1.10 (DC to 3 GHz)
驻波比(弯式)	VSWR(Right Angle)	1.15 (DC to 3 GHz)
插入损耗	Insertion Loss	≤ 0.05 √f(GHz) dB
绝缘电阻	Insulation Resistance	≥ 5000 MΩ
内导体接触电阻	Center Contact Resistance	≤ 1.0 mΩ
外导体接触电阻	Out Contact Resistance	≤ 0.25 mΩ
测试电压	Test Voltage	2500 V
三阶互调	PIM(3 rd order)	≤ -160 dBc @ 2 × 20 W
机械性能	Mechanical Data	
插拔次数	Mating Cycles	≥ 500
结合扭矩	Coupling Torque	Max 1.7 Nm
建议结合扭矩	Recommended Coupling Torque	0.7-1.1 Nm
螺母保持力	Coupling Nut Retention	≥ 450 N
内导体保持力	Center Contact Captivation	Axial: ≥ 28 N Radial: ≥ 3 Ncm
环境性能	Environmental Data	
温度范围	Temperature Range	-55 °C - +155 °C
盐雾	Salt Mist	IEC 61169 Clause 9.4.6
气候试验	Climatic Test	IEC 61169-1 55/155/21
冲击	Shock	IEC 61169 Clause 9.3.14
振动	Vibrations	IEC 61169 Clause 9.3.3
防护等级	Degree Of Protection	IEC 60529 IP68
材料	Materials	
外导体	Outer Contact	Brass CuSnZn Plating
内导体	Center Contact	Brass Ag Plating
弹性接触件	Spring Loaded Contact Parts	Bronze Ag Plating
绝缘体	Dielectric	PTFE
压接管	Crimping Ferrule	Copper Alloy CuSnZn Plating
垫片	Gasket	Rubber

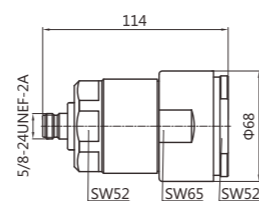
7/16

N RF Coaxial Connectors

射频同轴连接器

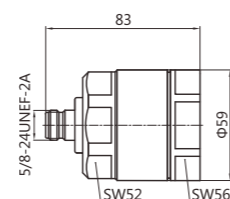
N

Product No.	Cable Group	Plt	Imp
产品型号	适配电缆	镀层	阻抗
NF-1-5/8	13/8"	CuSnZn	50Ω



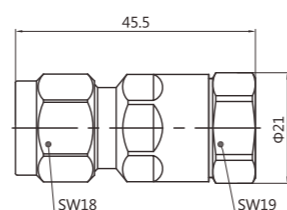
A.3-1

Product No.	Cable Group	Plt	Imp
产品型号	适配电缆	镀层	阻抗
NF-1-5/8-01	13/8"	CuSnZn	50Ω



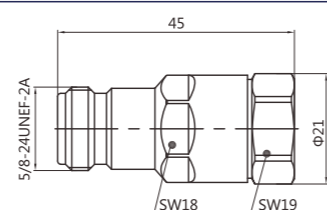
A.3-2

Product No.	Cable Group	Plt	Imp
产品型号	适配电缆	镀层	阻抗
NM-YD12	1/2"	CuSnZn	50Ω



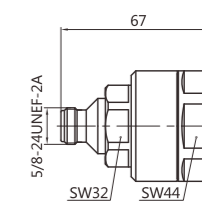
A.3-3

Product No.	Cable Group	Plt	Imp
产品型号	适配电缆	镀层	阻抗
NF-YD12	1/2"	CuSnZn	50Ω



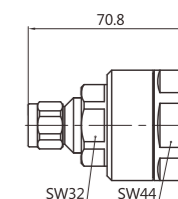
A.3-4

Product No.	Cable Group	Plt	Imp
产品型号	适配电缆	镀层	阻抗
NF-YD32	5/4"	CuSnZn	50Ω



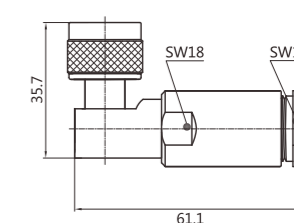
A.3-5

Product No.	Cable Group	Plt	Imp
产品型号	适配电缆	镀层	阻抗
NM-YD32	5/4"	CuSnZn	50Ω



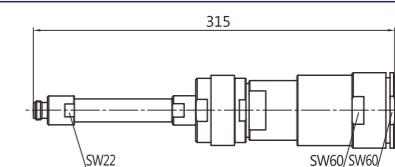
A.3-6

Product No.	Cable Group	Plt	Imp
产品型号	适配电缆	镀层	阻抗
NMRX-8DFB	8DFB	CuSnZn	50Ω



A.3-7

Product No.	Cable Group	Plt	Imp
产品型号	适配电缆	镀层	阻抗
N-K920(50/75)	N/A	CuSnZn	50/75Ω



A.3-8

S7/16

TNC

BNC

1.6/5.6

SMA

SMB

SMC

MCX

BMA

SMP

1.0/2.3

ADAPTORS

SURGE
ARRESTORS

7/16

N RF Coaxial Connectors

射频同轴连接器

S7/16

N



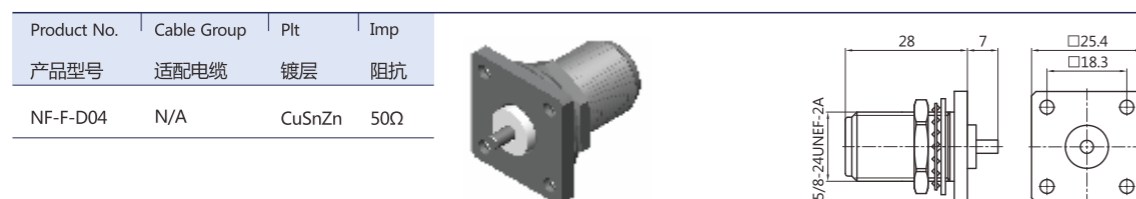
A.3-9



A.3-10



A.3-11



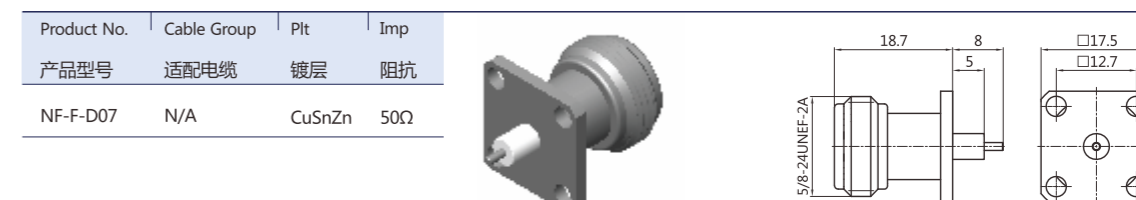
A.3-12



A.3-13



A.3-14



A.3-15



A.3-16

TNC

BNC

1.6/5.6

SMA

SMB

SMC

MCX

BMA

SMP

1.0/2.3

ADAPTORS

SURGE
ARRESTORS

7/16

N RF Coaxial Connectors

射频同轴连接器

N

TNC

BNC

1.6/5.6

SMA

SMB

SMC

MCX

BMA

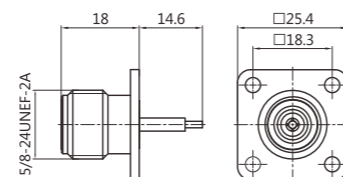
SMP

1.0/2.3

ADAPTORS

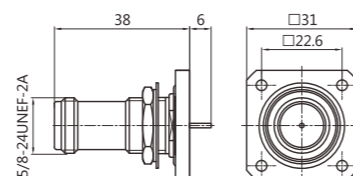
SURGE
ARRESTORS

Product No.	Cable Group	Plt	Imp
产品型号	适配电缆	镀层	阻抗
NF-F-D09	N/A	CuSnZn	50Ω



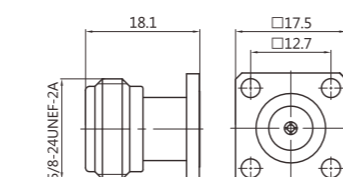
A.3-17

Product No.	Cable Group	Plt	Imp
产品型号	适配电缆	镀层	阻抗
NF-F-D10	N/A	CuSnZn	50Ω



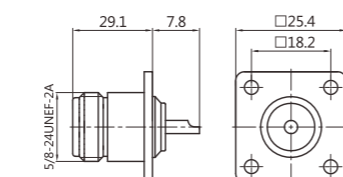
A.3-18

Product No.	Cable Group	Plt	Imp
产品型号	适配电缆	镀层	阻抗
NF-F-D11	N/A	CuSnZn	50Ω



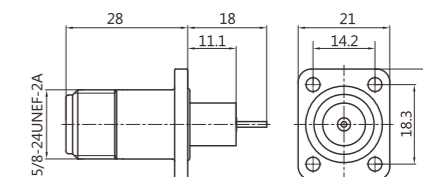
A.3-19

Product No.	Cable Group	Plt	Imp
产品型号	适配电缆	镀层	阻抗
NF-F-D12	N/A	CuSnZn	50Ω



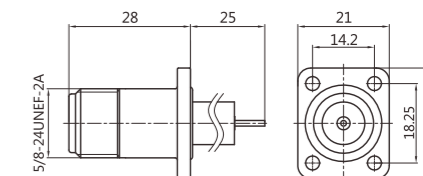
A.3-20

Product No.	Cable Group	Plt	Imp
产品型号	适配电缆	镀层	阻抗
NF-F-D13	N/A	CuSnZn	50Ω



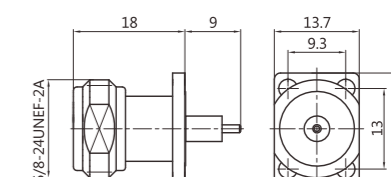
A.3-21

Product No.	Cable Group	Plt	Imp
产品型号	适配电缆	镀层	阻抗
NF-F-D14	N/A	CuSnZn	50Ω



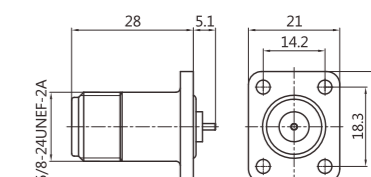
A.3-22

Product No.	Cable Group	Plt	Imp
产品型号	适配电缆	镀层	阻抗
NF-F-D15	N/A	CuSnZn	50Ω



A.3-23

Product No.	Cable Group	Plt	Imp
产品型号	适配电缆	镀层	阻抗
NF-F-D16	N/A	CuSnZn	50Ω



A.3-24

7/16

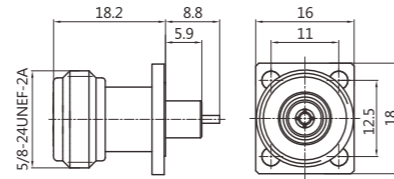
N RF Coaxial Connectors

射频同轴连接器

S7/16

N

Product No.	Cable Group	Plt	Imp
产品型号	适配电缆	镀层	阻抗
NF-F-D17	N/A	CuSnZn	50Ω



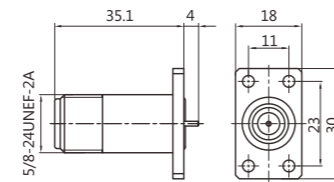
A.3-25

TNC

BNC

1.6/5.6

Product No.	Cable Group	Plt	Imp
产品型号	适配电缆	镀层	阻抗
NF-F-D18	N/A	CuSnZn	50Ω



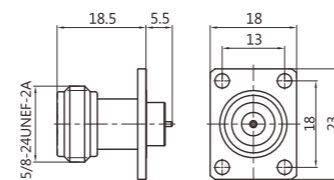
A.3-26

SMA

SMB

SMC

Product No.	Cable Group	Plt	Imp
产品型号	适配电缆	镀层	阻抗
NF-F-D19	N/A	CuSnZn	50Ω



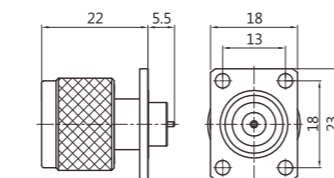
A.3-27

MCX

BMA

SMP

Product No.	Cable Group	Plt	Imp
产品型号	适配电缆	镀层	阻抗
NF-F-D20	N/A	CuSnZn	50Ω



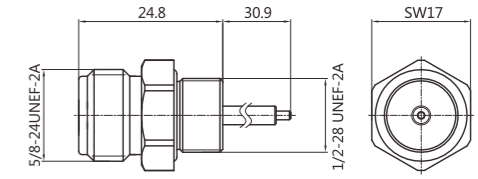
A.3-28

1.0/2.3

ADAPTORS

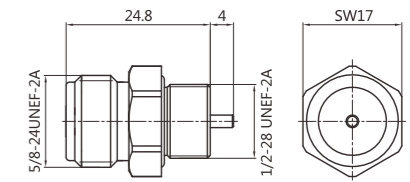
SURGE
ARRESTORS

Product No.	Cable Group	Plt	Imp
产品型号	适配电缆	镀层	阻抗
NF-D01	N/A	CuSnZn	50Ω



A.3-29

Product No.	Cable Group	Plt	Imp
产品型号	适配电缆	镀层	阻抗
NF-D02	N/A	CuSnZn	50Ω



A.3-30

7/16

S7/16

N

TNC

BNC

1.6/5.6

SMA

SMB

SMC

MCX

BMA

SMP

1.0/2.3

ADAPTORS

SURGE
ARRESTORS

TNC RF Coaxial Connectors

射频同轴连接器

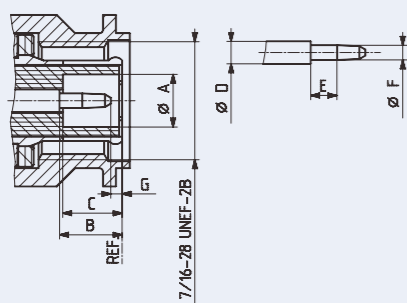
TNC型产品是一种具有螺纹连接机构的射频同轴连接器，特性阻抗50Ω。其特点是工作频率宽，连接可靠，抗振性好等。可广泛用于计算机网络、电台基站、航天航海、雷达监控等无线电仪器设备的射频连接RF同轴电缆用。

TNC-type is a RF coaxial connector with threaded connection mechanism, whose characteristic impedance is 50Ω. It features wide working frequency, reliable connection, good vibration resistance. It can be widely used in computer networks, radio base stations, spaceflight sea navigation, radar surveillance and other radio equipment using radio frequency connector coaxial cable.

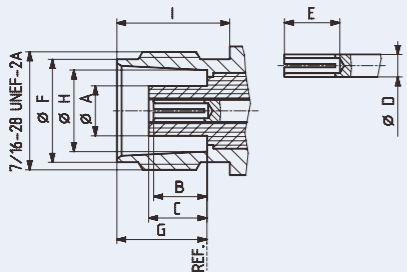
界面尺寸配合

Interface Mating Dimensions

插针连接器
Pin Connector



插孔连接器
Socket Connector



	PLUG(mm/inch)		JACK(mm/inch)	
	最小值	最大值	最小值	最大值
A	4.83/.190	—	—	4.72/.186
B	5.33/.210	5.84/.230	4.72/.186	5.23/.206
C	5.28/.208	5.79/.228	4.78/.188	5.28/.208
D	2.06/.081	2.21/.087	2.06/.081	2.21/.087
E	1.98/.078	—	4.95/.195	—
F	1.32/.052	1.37/.054	9.60/.378	9.70/.382
G	0.08/.003	—	8.31/.327	8.51/.335
H	—	—	8.10/.319	8.15/.321
I	—	—	10.52/.414	—

技术参数

Technical Data

适用标准	Applicable Standards	
界面尺寸	Interface According To	IEC 60169-17 GB/T 11313-17
电气性能	Electrical Data	
阻抗	Impedance	50 Ω
频率范围	Frequency Range	DC to 10 GHz
驻波比(直式)	VSWR(Straight)	1.22 (DC to 3 GHz)
驻波比(弯式)	VSWR(Right Angle)	1.30 (DC to 3 GHz)
插入损耗	Insertion Loss	≤ 0.1 √f(GHz) dB
绝缘电阻	Insulation Resistance	≥ 5000 MΩ
内导体接触电阻	Center Contact Resistance	≤ 1.5 mΩ
外导体接触电阻	Out Contact Resistance	≤ 1 mΩ
测试电压	Test Voltage	1500 V
机械性能	Mechanical Data	
插拔次数	Mating Cycles	≥ 500
结合扭矩	Coupling Torque	Max 1.7 Nm
建议结合扭矩	Recommended Coupling Torque	0.46-0.69 Nm
内导体保持力	Center Contact Captivation	Axial: ≥ 27 N
环境性能	Environmental Data	
温度范围	Temperature Range	-65 °C - +165 °C
盐雾	Salt Mist	IEC 61169-1 Clause 9.4.6
气候试验	Climatic Test	IEC 60068 55/155/21
冲击	Shock	IEC 61169 Clause 9.3.14
振动	Vibrations	IEC 61169 Clause 9.3.3
防护等级	Degree Of Protection	IEC 60529
材料	Materials	
外导体	Outer Contact	Brass Au Plating
内导体	Center Contact	Brass Au Plating
弹性接触件	Spring Loaded Contact Parts	CuBe2 Au Plating
绝缘体	Dielectric	PTFE
压接管	Crimping Ferrule	Copper Alloy CuSnZn Plating
垫片	Gasket	Rubber

7/16

S7/16

N

TNC

BNC

1.6/5.6

SMA

SMB

SMC

MCX

BMA

SMP

1.0/2.3

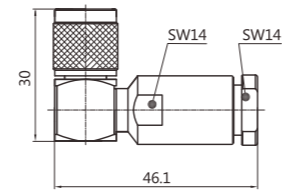
ADAPTORS

SURGE
ARRESTORS

TNC RF Coaxial Connectors

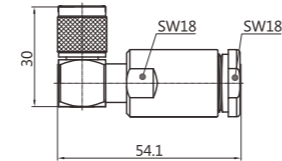
射频同轴连接器

Product No.	Cable Group	Plt	Imp
产品型号	适配电缆	镀层	阻抗
TNCMRX-8DFB	8DFB	CuSnZn	50Ω



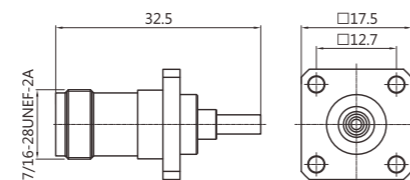
A.4-1

Product No.	Cable Group	Plt	Imp
产品型号	适配电缆	镀层	阻抗
TNCMRX-5DFB	5DFB	CuSnZn	50Ω



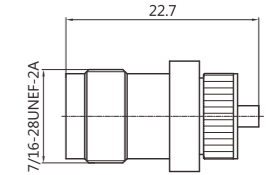
A.4-2

Product No.	Cable Group	Plt	Imp
产品型号	适配电缆	镀层	阻抗
TNC	N/A	CuSnZn	50Ω



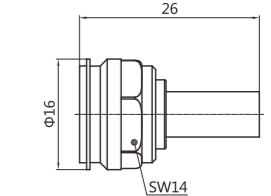
A.4-3

Product No.	Cable Group	Plt	Imp
产品型号	适配电缆	镀层	阻抗
TNC-01	N/A	CuSnZn	50Ω



A.4-4

Product No.	Cable Group	Plt	Imp
产品型号	适配电缆	镀层	阻抗
TNC-02	RG141/U	CuSnZn	50Ω



A.4-5

7/16

S7/16

N

TNC

BNC

1.6/5.6

SMA

SMB

SMC

MCX

BMA

SMP

1.0/2.3

ADAPTORS

SURGE
ARRESTORS

BNC RF Coaxial Connectors

射频同轴连接器

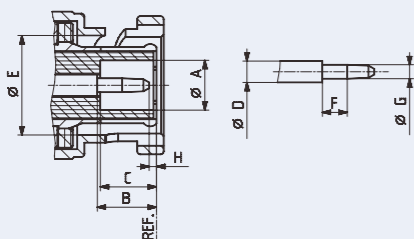
BNC型是一种卡口式连接的射频同轴连接器，特性阻抗分别为50Ω和75Ω两种。它具有连接（分离）迅速，接触可靠等特点。广泛应用于计算机行业、无线网络、医疗设备和电子仪器领域。

BNC type is a RF coaxial connector with bayonet connection, whose characteristic impedance can be classified into 50Ω and 75Ω two kinds. It features rapid connection (separation) and reliable contact and is widely used in the computer industry, wireless networks, medical equipment and electronic instruments.

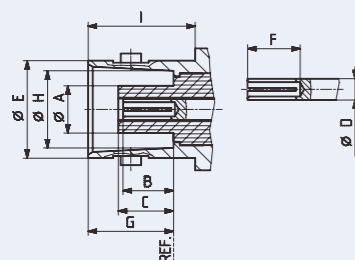
界面尺寸配合

Interface Mating Dimensions

插针连接器
Pin Connector



插孔连接器
Socket Connector



	PLUG(mm/inch)		JACK(mm/inch)	
	最小值	最大值	最小值	最大值
A	4.83/.190	—	—	4.72/.186
B	5.33/.210	5.84/.230	4.72/.186	5.23/.206
C	5.28/.208	5.79/.228	4.78/.188	5.28/.208
D	2.06/.081	2.21/.087	2.06/.081	2.21/.087
E	9.78/.385	9.91/.390	9.60/.378	9.70/.382
F	1.98/.078	—	4.95/.195	—
G	1.32/.052	1.37/.054	8.31/.327	8.51/.335
H	0.08/.003	—	8.10/.319	8.15/.321
I	—	—	10.52/.414	—

技术参数

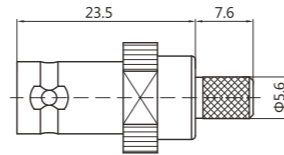
Technical Data

适用标准	Applicable Standards	
界面尺寸	Interface According To	IEC 60169-8 GB/T 11313-8
电气性能	Electrical Data	
阻抗	Impedance	50 Ω
频率范围	Frequency Range	DC to 10 GHz
驻波比	VSWR	1.20 (DC to 3 GHz)
插入损耗	Insertion Loss	≤ 0.1 √f(GHz) dB
绝缘电阻	Insulation Resistance	≥ 5000 MΩ
内导体接触电阻	Center Contact Resistance	≤ 1.5 mΩ
外导体接触电阻	Out Contact Resistance	≤ 1.0 mΩ
测试电压	Test Voltage	1500 V
机械性能	Mechanical Data	
插拔次数	Mating Cycles	≥ 500
内导体保持力	Center Contact Captivation	Axial: ≥ 27 N
环境性能	Environmental Data	
温度范围	Temperature Range	-65 °C - +165 °C
盐雾	Salt Mist	IEC 60169 Clause 9.4.6
气候试验	Climatic Test	IEC 60068 55/155/21
冲击	Shock	IEC 61169 Clause 9.3.14
振动	Vibrations	IEC 61169 Clause 9.3.3
防护等级	Degree Of Protection	IEC 60529
材料	Materials	
外导体	Outer Contact	Brass Au Plating
内导体	Center Contact	Brass Au Plating
弹性接触件	Spring Loaded Contact Parts	CuBe2 Au Plating
绝缘体	Dielectric	PTFE
压接管	Crimping Ferrule	Copper Alloy CuSnZn Plating
垫片	Gasket	Rubber

BNC RF Coaxial Connectors

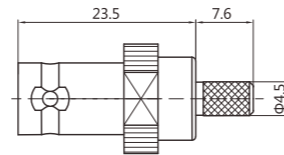
射频同轴连接器

Product No.	Cable Group	Plt	Imp
产品型号	适配电缆	镀层	阻抗
A-BNCFY-75 -RG59B/U	RG59B/U	Au	75Ω



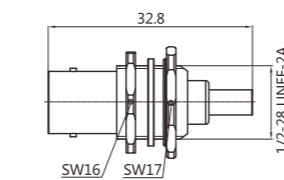
A.5-1

Product No.	Cable Group	Plt	Imp
产品型号	适配电缆	镀层	阻抗
BNCFY-RG58	RG58	Au	50Ω



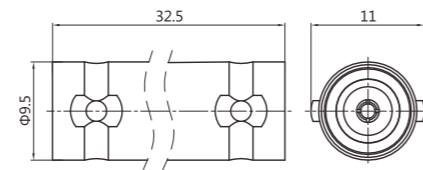
A.5-2

Product No.	Cable Group	Plt	Imp
产品型号	适配电缆	镀层	阻抗
BNC	N/A	Au	50Ω



A.5-3

Product No.	Cable Group	Plt	Imp
产品型号	适配电缆	镀层	阻抗
BNCF/BNCF	N/A	Au	50Ω



A.5-4

1.6/5.6 RF Coaxial Connectors

射频同轴连接器

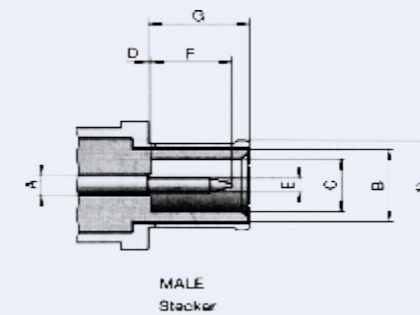
1.6/5.6型连接器具有螺纹、卡锁机构，特性阻抗为75Ω。该产品供通信设备和无线电仪表的射频回路中连接射频同轴电缆用，具有稳定可靠的高速传输设计，体积小，机械性能和电性能稳定可靠。

1.6/5.6 type connector has threaded and latch mechanism, whose characteristic impedance is 75Ω. The product is used for connection with RF coaxial cable in RF circuits of communications equipment and radio instrumentation, with stable and reliable high-speed transmission design, small size, reliable mechanical and electrical properties.

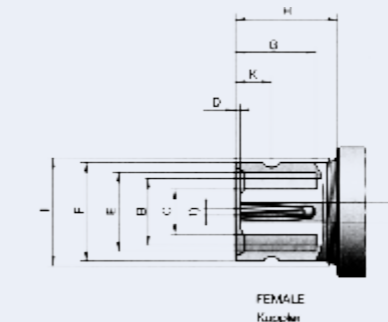
界面尺寸配合

Interface Mating Dimensions

插针连接器
Pin Connector



插孔连接器
Socket Connector



	MALE(stecker)		FEMALE(kuppler)	
	最小值	最大值	最小值	最大值
A	1.60 nom.		1.60 nom.	
B	5.60 nom.		5.60 nom.	
C	4.00	—	—	3.80
D	—	0.15	0.25	0.75
E	0.97	1.03	6.60	6.69
F	—	5.50	8.10	8.25
G	6.40	6.60	6.70	—
H	—	—	9.70	—
I	—	—	M 9×0.5	
K	—	—	2.90	3.10

1.6/5.6 RF Coaxial Connectors

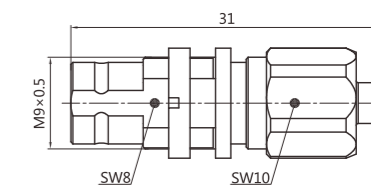
射频同轴连接器

技术参数

Technical Data

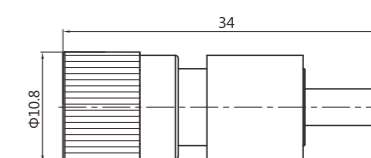
适用标准	Applicable Standards	
界面尺寸	Interface According To	IEC 60169-13 GB/T 11313-13
电气性能	Electrical Data	
阻抗	Impedance	75 Ω
频率范围	Frequency Range	DC to 4 GHz
回损	Return Loss	≥33dB (DC-1GHz) ≥27.5dB (1-4GHz) ≥20.8dB (2-4GHz)
绝缘电阻	Insulation Resistance	≥ 10000 MΩ
内导体接触电阻	Center Contact Resistance	≤ 4 mΩ
外导体接触电阻	Out Contact Resistance	≤ 2 mΩ
测试电压	Test Voltage	1000 V
射频泄露	RF-leakage	≥ 90 dB up to 1 GHz
机械性能	Mechanical Data	
插拔次数	Mating Cycles	≥ 500
结合扭矩	Coupling Torque	30 Ncm Max
内导体保持力	Center Contact Captivation	Axial: ≥ 30 N
环境性能	Environmental Data	
温度范围	Temperature Range	-40 °C - +85 °C
盐雾	Salt Mist	IEC 60169 Clause 9.4.6
气候试验	Climatic Test	IEC 60068-2-1 40/85/21
振动	Vibrations	IEC 60068-2-6
材料	Materials	
外导体	Outer Contact	Brass Au Plating
内导体	Center Contact	Brass Au Plating
弹性接触件	Spring Loaded Contact Parts	CuBe2 Au Plating
压接管	Crimping Ferrule	Copper Alloy CuSnZn Plating
绝缘体	Dielectric	PTFE
垫片	Gasket	Rubber

Product No.	Cable Group	Plt	Imp
产品型号	适配电缆	镀层	阻抗
1.6/5.6	N/A	CuSnZn	75Ω



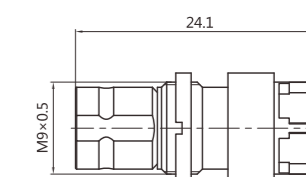
A.6-1

Product No.	Cable Group	Plt	Imp
产品型号	适配电缆	镀层	阻抗
1.6/5.6-01	N/A	CuSnZn	75Ω



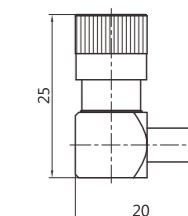
A.6-2

Product No.	Cable Group	Plt	Imp
产品型号	适配电缆	镀层	阻抗
1.6/5.6-02	N/A	CuSnZn	75Ω



A.6-3

Product No.	Cable Group	Plt	Imp
产品型号	适配电缆	镀层	阻抗
1.6/5.6-03	N/A	CuSnZn	75Ω



A.6-4

7/16

S7/16

N

TNC

BNC

1.6/5.6

SMA

SMB

SMC

MCX

BMA

SMP

1.0/2.3

ADAPTORS

SURGE
ARRESTORS

SMA RF Coaxial Connectors

射频同轴连接器

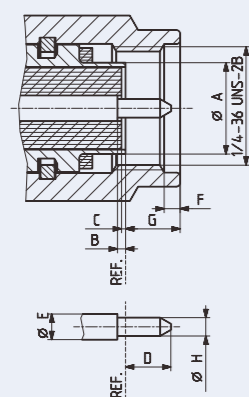
SMA型产品是一种应用广泛的小型螺纹连接的同轴连接器，特性阻抗50Ω。它具有频带宽，性能优，高可靠的特点。适用于无线网络、程控、微波设备和数字通信系统连接RF电缆或微带线。使用半刚半柔电缆，频率可达18GHz。

SMA type is a widely used small coaxial connector with threaded connection, whose characteristic impedance is 50Ω. It features a wide frequency bandwidth, excellent performance, high reliability. It is applicable to wireless networks, program-controlled, microwave devices and digital communication system connecting RF cable or microstrip line. It uses semi-rigid semi-flexible cables, and its frequency can reach 18GHz.

界面尺寸配合

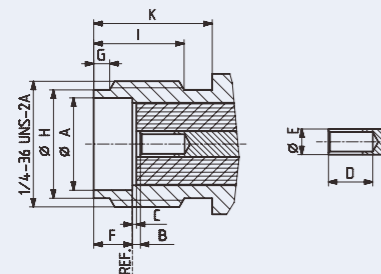
Interface Mating Dimensions

插针连接器
Pin Connector



	PLUG(mm/inch)		JACK(mm/inch)	
	最小值	最大值	最小值	最大值
A	—	4.59/1.81	4.59/.181	—
B	0.00/.000	0.25/.010	0.00/.000	0.25/.010
C	0.00/.000	0.25/.010	0.00/.000	0.25/.010
C	—	2.54/.100	2.67/.105	—
E	1.24/.049	1.29/.051	1.24/.049	1.29/.051
F	0.38/.015	1.14/.045	1.88/.047	1.98/.078
G	—	3.43/.135	0.38/.015	1.14/.045
H	0.90/.036	0.94/.037	5.28/.208	5.49/.216
I	—	—	4.32/.170	—
K	—	—	5.54/.218	—

插孔连接器
Socket Connector



技术参数

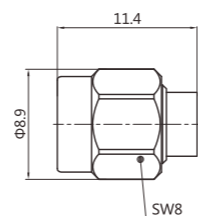
Technical Data

适用标准	Applicable Standards	
界面尺寸	Interface According To	IEC 60169-15 GB/T 11313-15
电气性能	Electrical Data	
阻抗	Impedance	50 Ω
频率范围	Frequency Range	DC to 18 GHz
驻波比(直式)	VSWR(straight)	≤ 1.1 + 0.02 f(GHz)
插入损耗	Insertion Loss	≤ 0.04 √f(GHz) dB
绝缘电阻	Insulation Resistance	≥ 5000 MΩ
内导体接触电阻	Center Contact Resistance	≤ 3.0 mΩ
外导体接触电阻	Out Contact Resistance	≤ 2.0 mΩ
测试电压	Test Voltage	1000 V
机械性能	Mechanical Data	
插拔次数	Mating Cycles	≥ 500
结合扭矩	Coupling Torque	Max 1.7 Nm
建议结合扭矩	Recommended Coupling Torque	0.9-1.1 Nm
螺母保持力	Coupling Nut Retention	≥ 270 N
环境性能	Environmental Data	
温度范围	Temperature Range	-65 °C - +165 °C
盐雾	Salt Mist	IEC 61169-1 Clause 9.4.6
气候等级	Climatic Class	IEC 60068 55/155/21
冲击	Shock	IEC 61169 Clause 9.3.14
振动	Vibrations	IEC 61169 Clause 9.3.3
材料	Materials	
外导体	Outer Contact	Brass Au Plating
内导体	Center Contact	Brass Au Plating
弹性接触件	Spring Loaded Contact Parts	CuBe2 Au Plating
压接管	Crimping Ferrule	Copper Alloy CuSnZn Plating
绝缘体	Dielectric	PTFE
垫片	Gasket	Rubber

SMA RF Coaxial Connectors

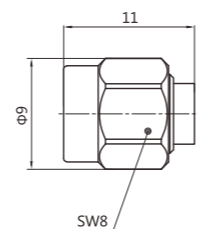
射频同轴连接器

Product No.	Cable Group	Plt	Imp
产品型号	适配电缆	镀层	阻抗
SMAMH-RG141	N/A	Au	50Ω



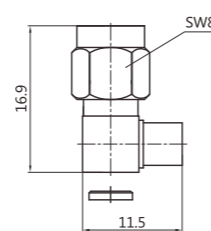
A.7-1

Product No.	Cable Group	Plt	Imp
产品型号	适配电缆	镀层	阻抗
SMA-JB3	RG402/U	Au	50Ω



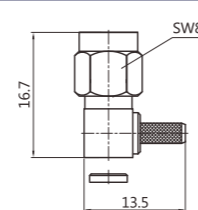
A.7-2

Product No.	Cable Group	Plt	Imp
产品型号	适配电缆	镀层	阻抗
SMA-JWB3	RG402/U	Au	50Ω



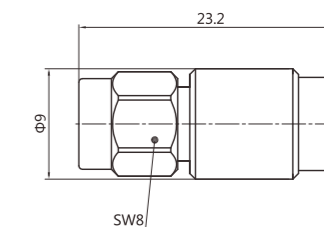
A.7-3

Product No.	Cable Group	Plt	Imp
产品型号	适配电缆	镀层	阻抗
SMA-JW3	SYU-50-2-1	Au	50Ω



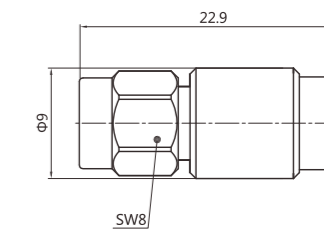
A.7-4

Product No.	Cable Group	Plt	Imp
产品型号	适配电缆	镀层	阻抗
SMAMH-YD5AA	1/4S	Au	50Ω



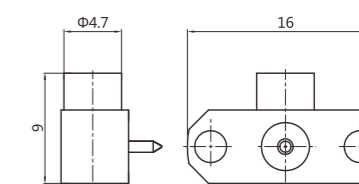
A.7-5

Product No.	Cable Group	Plt	Imp
产品型号	适配电缆	镀层	阻抗
SMAM.H-YD5	1/4S	Au	50Ω



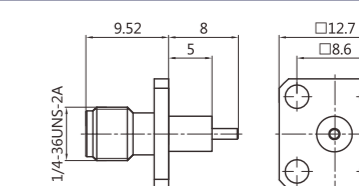
A.7-6

Product No.	Cable Group	Plt	Imp
产品型号	适配电缆	镀层	阻抗
SMAMRH-RG141	RG141	Au	50Ω



A.7-7

Product No.	Cable Group	Plt	Imp
产品型号	适配电缆	镀层	阻抗
A-SMAFF	N/A	Au	50Ω

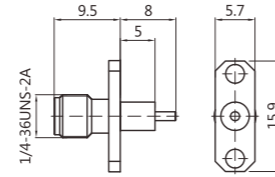


A.7-8

SMA RF Coaxial Connectors

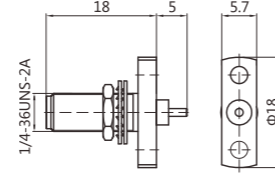
射频同轴连接器

Product No.	Cable Group	Plt	Imp
产品型号	适配电缆	镀层	阻抗
A-SMAFF-01	N/A	Au	50Ω



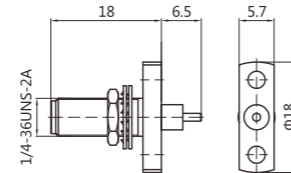
A.7-9

Product No.	Cable Group	Plt	Imp
产品型号	适配电缆	镀层	阻抗
A-SMAFF-02	N/A	Au	50Ω



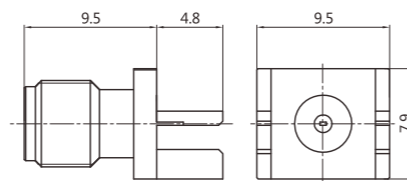
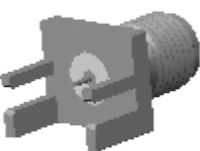
A.7-10

Product No.	Cable Group	Plt	Imp
产品型号	适配电缆	镀层	阻抗
A-SMAFF-03	N/A	Au	50Ω



A.7-11

Product No.	Cable Group	Plt	Imp
产品型号	适配电缆	镀层	阻抗
SMA	N/A	Au	50Ω



A.7-12

SMB RF Coaxial Connectors

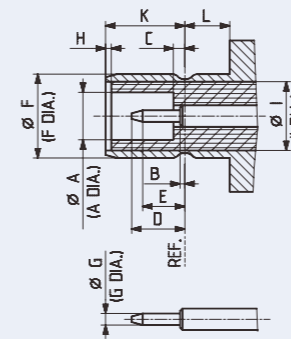
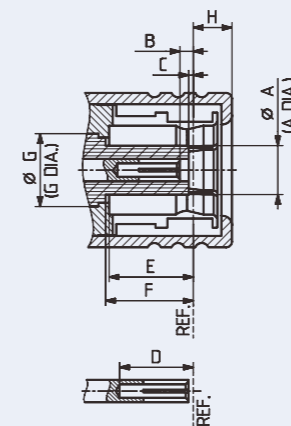
射频同轴连接器

SMB型产品是一种低功率,推入锁紧式小型射频同轴连接器。特性阻抗分别为50Ω和75Ω两种。它具有体积小、重量轻、电性能优良、使用方便的特点、适用于无线电通讯、检测仪器、仪表、电台、电视台基站及微波系统RF电缆用。

SMB type is a low-power, push-in locking type small RF coaxial connector. Its characteristic impedance can be classified into 50Ω and 75Ω two kinds. It features small size, light weight, excellent electrical performance, moreover, it is easy to use, suitable for RF cable of radio communications, test equipment, instrumentation, radio, television base stations and microwave systems.

界面尺寸配合

Interface Mating Dimensions

插针连接器
Pin Connector插孔连接器
Socket Connector

	PLUG(mm/inch)		JACK(mm/inch)	
	最小值	最大值	最小值	最大值
A	—	2.06/.081	2.08/.082	—
B	0.18/.007	0.94/.037	—	0.18/.007
C	0.18/.007	—	—	0.18/.007
D	2.97/.117	—	—	2.97/.117
E	3.58/.141	—	1.32/.052	—
F	3.58/.141	—	3.66/.144	3.71/.146
G	3.05/.120 nom.		0.48/.019	0.53/.021
H	—	1.63/.064	0.00/000	—
I	—	—	3.05/.120 nom.	
K	—	—	3.33/.131	3.58/.141
L	—	—	1.65/.065	—

SMB RF Coaxial Connectors

射频同轴连接器

技术参数

Technical Data

适用标准	Applicable Standards		
界面尺寸	Interface According To	IEC 60169-10	GB/T 11313-10
电气性能	Electrical Data		
阻抗	Impedance	50 Ω	
频率范围	Frequency Range	DC to 4 GHz	
驻波比 (直式)	VSWR(straight)	≤ 1.30	
插入损耗	Insertion Loss	≤ 0.1 √f(GHz) dB	
绝缘电阻	Insulation Resistance	≥ 1000 MΩ	
内导体接触电阻	Center Contact Resistance	≤ 5.0 mΩ	
外导体接触电阻	Out Contact Resistance	≤ 2.5 mΩ	
测试电压	Test Voltage	750 V	
机械性能	Mechanical Data		
插拔次数	Mating Cycles	≥ 500	
结合扭矩	Coupling Torque	≤ 63N	
建议结合扭矩	Recommended Coupling Torque	8-63 N	
内导体保持力	Center Contact Captivation	Axial: ≥ 10 N	
环境性能	Environmental Data		
温度范围	Temperature Range	-55 °C - +155 °C	
盐雾	Salt Mist	IEC 61169-1 Clause 9.4.6	
冲击	Shock	IEC 61169 Clause 9.3.14	
振动	Vibrations	IEC 61169 Clause 9.3.3	
材料	Materials		
外导体	Outer Contact	Brass	Au Plating
内导体	Center Contact	Brass	Au Plating
弹性接触件	Spring Loaded Contact Parts	CuBe2	Au Plating
压接管	Crimping Ferrule	Copper Alloy	CuSnZn Plating
绝缘体	Dielectric	PTFE	
垫片	Gasket	Rubber	

Product No.	Cable Group	Plt	Imp
产品型号	适配电缆	镀层	阻抗
SMBFY-RG58	RG58	Au	50Ω



A.8-1

Product No.	Cable Group	Plt	Imp
产品型号	适配电缆	镀层	阻抗
SMB	N/A	Au	50Ω



A.8-2

Product No.	Cable Group	Plt	Imp
产品型号	适配电缆	镀层	阻抗
SMB-K	N/A	Au	50Ω



A.8-3

Product No.	Cable Group	Plt	Imp
产品型号	适配电缆	镀层	阻抗
SMBM.H-75AB	N/A	Au	75Ω



A.8-4

Product No.	Cable Group	Plt	Imp
产品型号	适配电缆	镀层	阻抗
SMB-01	N/A	Au	50Ω



A.8-5

7/16

S7/16

N

TNC

BNC

1.6/5.6

SMA

SMB

SMC

MCX

BMA

SMP

1.0/2.3

ADAPTORS

SURGE
ARRESTORS

SMC RF Coaxial Connectors

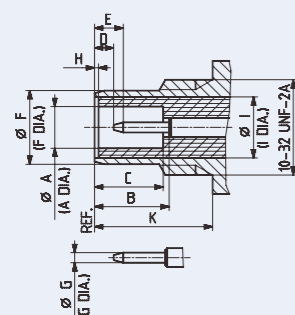
射频同轴连接器

SMC型产品是在SMB基础上增加了螺纹连接形式的一种小型连接器，特性阻抗50Ω。它具有体积小、重量轻、连接可靠、抗震性好的特点。可供各类无线电设备、仪器连接RF电缆用。

SMC type is a small connector based on SMB and the only difference is that it has the additional threaded connection. Its characteristic impedance is 50Ω. It features small size, light weight, reliable connection and good shock resistance. It is applicable to various types of radio equipment, apparatus for RF cable connection.

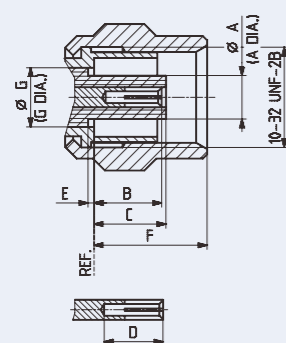
界面尺寸配合 Interface Mating Dimensions

插针连接器
Pin Connector



	PLUG(mm/inch)		JACK(mm/inch)	
	最小值	最大值	最小值	最大值
A	—	2.60/.081	2.08/.082	—
B	2.85/.112	3.40/.134	3.40/.134	—
C	—	3.40/.134	3.40/.134	—
D	2.79/.110	—	0.61/.024	—
E	0.00/.000	—	—	2.13/.084
F	—	5.92/.233	—	3.71/.146
G	—	3.05/.120 nom.	0.48/.019	0.53/.021
H	—	—	0.00/.000	—
I	—	—	—	3.05/.120 nom.
K	—	—	5.94/.234	—

插孔连接器
Socket Connector



技术参数

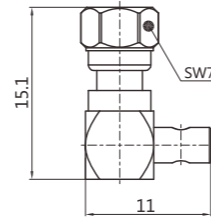
Technical Data

适用标准	Applicable Standards		
界面尺寸	Interface According To	IEC 60169-9	GB/T 11313-9
电气性能	Electrical Data		
阻抗	Impedance	50 Ω	
频率范围	Frequency Range	DC to 6 GHz	
驻波比	VSWR	≥ 30dB@DCto1GHz	≥ 20dB@1to3GHz ≥ 18dB@3to6GHz
插入损耗	Insertion Loss	≤ 0.1 √f(GHz) dB	
绝缘电阻	Insulation Resistance	≥ 1000 MΩ	
内导体接触电阻	Center Contact Resistance	≤ 5.0 mΩ	
外导体接触电阻	Out Contact Resistance	≤ 2.5 mΩ	
测试电压	Test Voltage	750 V	
机械性能	Mechanical Data		
插拔次数	Mating Cycles	≥ 500	
结合扭矩	Coupling Torque	0.71 Nm Max	
建议结合扭矩	Recommended Coupling Torque	0.25-0.35 Nm	
内导体保持力	Center Contact Captivation	Axial: ≥ 10 N	
环境性能	Environmental Data		
温度范围	Temperature Range	-55 °C - +155 °C	
盐雾	Salt Mist	IEC 61169-1 Clause 9.4.6	
冲击	Shock	IEC 61169 Clause 9.3.14	
振动	Vibrations	IEC 61169 Clause 9.3.3	
材料	Materials		
外导体	Outer Contact	Brass Au Plating	
内导体	Center Contact	Brass Au Plating	
弹性接触件	Spring Loaded Contact Parts	CuBe2 Au Plating	
压接管	Crimping Ferrule	Copper Alloy CuSnZn Plating	
绝缘体	Dielectric	PTFE	
垫片	Gasket	Rubber	

SMC RF Coaxial Connectors

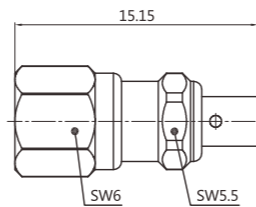
射频同轴连接器

Product No.	Cable Group	Plt	Imp
产品型号	适配电缆	镀层	阻抗
SMC	N/A	Au	50Ω



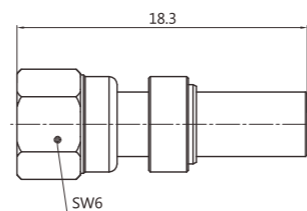
A.9-1

Product No.	Cable Group	Plt	Imp
产品型号	适配电缆	镀层	阻抗
SMC-01	N/A	Au	50Ω



A.9-2

Product No.	Cable Group	Plt	Imp
产品型号	适配电缆	镀层	阻抗
SMC-02	N/A	Au	50Ω



A.9-3

MCX RF Coaxial Connectors

射频同轴连接器

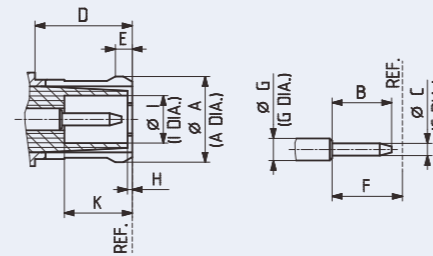
MCX型产品是一种小型推入紧锁式射频同轴连接器，特性阻抗分别为50Ω和75Ω两种。它具有体积小、重量轻、结构紧凑、使用方便的特点。适用于全球定位系统(GPS)、数字式(PCN)、各类无线电仪器、仪表、小型电子设备及无线网络(WLAN)系统。

MCX-type is a small push-in locking RF coaxial connector, whose characteristic impedances are 50Ω and 75Ω. It features small size, light weight, compact structure, and easy to use. It has been applied to the global positioning system (GPS), PCN, various kinds of radio equipment, instruments, small electronic devices and wireless network (WLAN) systems.

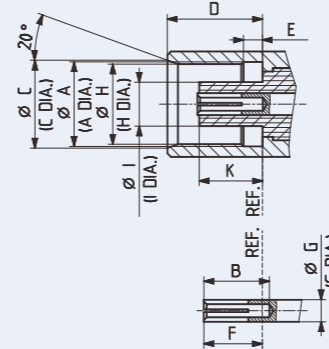
界面尺寸配合

Interface Mating Dimensions

插针连接器
Pin Connector



插孔连接器
Socket Connector



	PLUG(mm/inch)		JACK(mm/inch)	
	最小值	最大值	最小值	最大值
A	3.72/.146*	3.80/.150*	3.60/.142	3.70/.146
B	2.49/.098	2.59/.102	2.80/.110	—
C	0.48/.019	0.53/.021	3.75/.148	3.85/.152
D	4.15/.163	—	0.75/.030	0.85/.033
E	0.70/.028	0.75/.030	0.75/.030	0.85/.033
F	2.80/.110	3.20/.126	2.30/.091	2.80/.110
G	0.95/.037 nom.		0.95/.037 nom.	
H	—	0.30/.012	3.42/.135	3.48/.137
I	2.00/.079	2.07/.081	1.80/.071	1.98/.078
K	2.80/.110	3.20/.126	2.60/.102	2.80/.110

MCX RF Coaxial Connectors

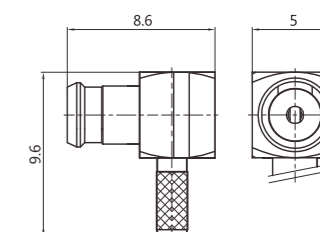
射频同轴连接器

技术参数

Technical Data

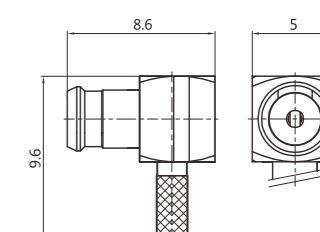
适用标准	Applicable Standards	
界面尺寸	Interface According To	IEC 60169-36 GB/T 11313-36
电气性能	Electrical Data	
阻抗	Impedance	50 Ω
频率范围	Frequency Range	DC to 6 GHz
驻波比 (直式)	VSWR(straight)	≤ 1.20
插入损耗	Insertion Loss	≤ 0.1 √f(GHz) dB
绝缘电阻	Insulation Resistance	≥ 1 GΩ
内导体接触电阻	Center Contact Resistance	≤ 5.0 mΩ
外导体接触电阻	Out Contact Resistance	≤ 2.5 mΩ
测试电压	Test Voltage	750 V
机械性能	Mechanical Data	
插拔次数	Mating Cycles	≥ 500
结合扭矩	Coupling Torque	≤ 25 N
建议结合扭矩	Recommended Coupling Torque	8-20 Nm
内导体保持力	Center Contact Captivation	Axial: ≥ 10 N
环境性能	Environmental Data	
温度范围	Temperature Range	-55 °C - +155 °C
盐雾	Salt Mist	IEC 61169-1 Clause 9.4.6
冲击	Shock	IEC 61169 Clause 9.3.14
振动	Vibrations	IEC 61169 Clause 9.3.3
材料	Materials	
外导体	Outer Contact	Brass Au Plating
内导体	Center Contact	Brass Au Plating
弹性接触件	Spring Loaded Contact Parts	CuBe2 Au Plating
压接管	Crimping Ferrule	Copper Alloy CuSnZn Plating
绝缘体	Dielectric	PTFE
垫片	Gasket	Rubber

Product No.	Cable Group	Plt	Imp
产品型号	适配电缆	镀层	阻抗
MCXMR-Y-RG316	RG316	Au	50Ω



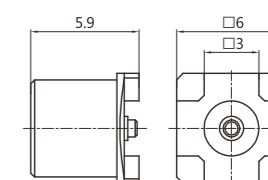
A.10-1

Product No.	Cable Group	Plt	Imp
产品型号	适配电缆	镀层	阻抗
MCXMR-Y-RG178/U	RG178/U	Au	50Ω



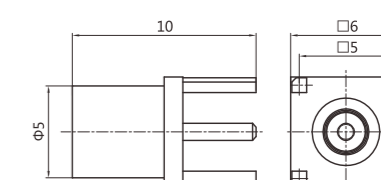
A.10-2

Product No.	Cable Group	Plt	Imp
产品型号	适配电缆	镀层	阻抗
MCX	N/A	Au	50Ω



A.10-3

Product No.	Cable Group	Plt	Imp
产品型号	适配电缆	镀层	阻抗
MCX-01	N/A	Au	50Ω

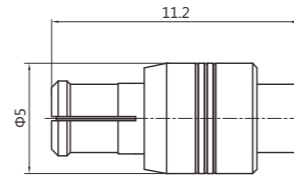


A.10-4

MCX RF Coaxial Connectors

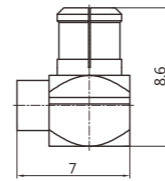
射频同轴连接器

Product No.	Cable Group	Plt	Imp
产品型号	适配电缆	镀层	阻抗
MCX-02	N/A	Au	50Ω



A.10-5

Product No.	Cable Group	Plt	Imp
产品型号	适配电缆	镀层	阻抗
MXC-03	N/A	Au	50Ω



A.10-6

BMA RF Coaxial Connectors

射频同轴连接器

BMA盲插是一种特殊尺寸的连接器的，其在微波应用中高达18GHz，可以提供一系列插孔在轴向或径向错位元配置的固定与浮动的连接器。BMA系列产品具有高可靠性和易于组装的特点。

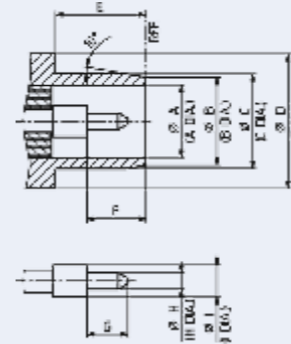
BMA blind-mate is a connector of special size, it can go up to 18GHz in microwave applications, it can provide a range of fixed and floating connectors whose jacks are staggering in the axial or radial direction. BMA series of products features high reliability and ease of assembly.

界面尺寸配合

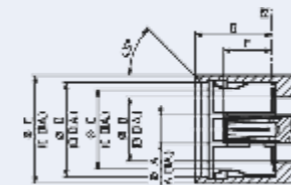
Interface Mating Dimensions

	PLUG(mm/inch)		JACK(mm/inch)	
	最小值	最大值	最小值	最大值
A	4.09/.161 nom.		1.78/.070 nom.	
B	4.88/.192 nom.		4.09/.161 nom.	
C	5.31/.209	5.35/.211	—	5.08/.200
D	7.62/.300 nom.		5.71/.225	—
E	5.03/.198	—	7.37/.290	—
F	3.25/.128	—	3.05/.120	3.23/.127
G	2.29/.090 nom.		—	5.03/.198
H	0.90/.035	0.94/.037		
I	1.78/.070 nom.			

插针连接器
Pin Connector



插孔连接器
Socket Connector



7/16

BMA RF Coaxial Connectors

S7/16

射频同轴连接器

N

技术参数

Technical Data

适用标准	Applicable Standards	
界面尺寸	Interface According To	IEC 60169-33 GB/T 11313-33
电气性能	Electrical Data	
阻抗	Impedance	50 Ω
频率范围	Frequency Range	DC to 18 GHz
驻波比	VSWR	≤ 1.05 + 0.012 f(GHz)
插入损耗	Insertion Loss	≤ 0.05 √f(GHz) dB
绝缘电阻	Insulation Resistance	≥ 5000 MΩ
内导体接触电阻	Center Contact Resistance	≤ 2.0 mΩ
外导体接触电阻	Out Contact Resistance	≤ 2.0 mΩ
测试电压	Test Voltage	1000 V
机械性能	Mechanical Data	
插拔次数	Mating Cycles	≥ 500
啮合力	Engagement Force	≤ 13.5 N
脱开力	Disengagement Force	≥ 2 N
内导体保持力	Center Contact Captivation	Axial: ≥ 20 N
环境性能	Environmental Data	
温度范围	Temperature Range	- 55 °C - +155 °C
盐雾	Salt Mist	IEC 61169-1 Clause 9.4.6
稳态湿热	Hermetic	IEC 61169 Clause 9.4.5.2
材料	Materials	
外导体	Outer Contact	Brass Au Plating
内导体	Center Contact	Brass Au Plating
弹性接触件	Spring Loaded Contact Parts	CuBe2 Au Plating
压接管	Crimping Ferrule	Copper Alloy CuSnZn Plating
绝缘体	Dielectric	PTFE

TNC

BNC

1.6/5.6

SMA

SMB

SMC

MCX

BMA

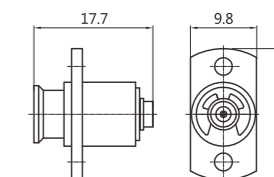
SMP

1.0/2.3

ADAPTORS

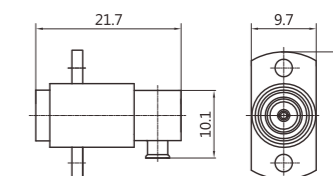
SURGE
ARRESTORS

Product No.	Cable Group	Plt	Imp
产品型号	适配电缆	镀层	阻抗
BMAFH-RG405	RG405	Au	50Ω



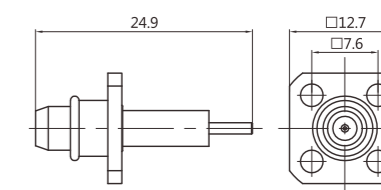
A.11-1

Product No.	Cable Group	Plt	Imp
产品型号	适配电缆	镀层	阻抗
BMAFRH-RG405	RG405	Au	50Ω



A.11-2

Product No.	Cable Group	Plt	Imp
产品型号	适配电缆	镀层	阻抗
SP	N/A	Au	50Ω



A.11-3

7/16

S7/16

N

TNC

BNC

1.6/5.6

SMA

SMB

SMC

MCX

BMA

SMP

1.0/2.3

ADAPTORS

SURGE
ARRESTORS

SMP RF Coaxial Connectors

射频同轴连接器

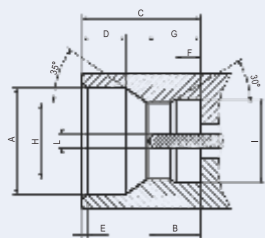
SMP系列产品是一种超小型推入式射频同轴连接器，具有体积小、重量轻、抗震性能优越、工作频带宽等特点，使用频率达30GHz，其中插头具有全擒纵，半擒纵和光孔（包括带制动）三种界面形式，板间连接成对使用时，多种界面形式能够满足盲配所需的轴向或径向，适用于要求可靠性高模块化密集安装场合。

SMP series are ultra-small push-in RF coaxial connectors, which feature small size, light weight, excellent seismic performance, wide frequency band, and its operating frequency can go up to 30GHz, and its plugs have three forms of interface: full escapement, half escapement and light holes (including band brake). When the connectors between the boards (board to board) are used in pairs, various forms of interface can meet the axial or radial floating required by blind-mating, and it is applicable to the required high reliability modular intensive installations.

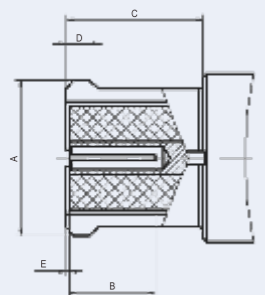
界面尺寸配合

Interface Mating Dimensions

插针连接器
Pin Connector



插孔连接器
Socket Connector



	PLUG(mm/inch)		JACK(mm/inch)	
	最小值	最大值	最小值	最大值
A	—	3.43/.135	2.96/.117	4.36/.172
B	1.78/.070	—	1.15/.045	1.39/.055
C	2.84/.112	—	2.74/.108	2.84/.112
D	—	0.53/.021	0.83/.033	0.93/.037
E	0/.000	0.20/.008	--/.003	--/.002
F	—	—	0.52/.020	0.59/.023
G	—	—	1.29/.051	1.44/.057
H	—	—	2.89/.114	2.99/.117
I	—	—	3.14/.124	3.20/.126
L	—	—	0.35/.014	0.40/.016

技术参数

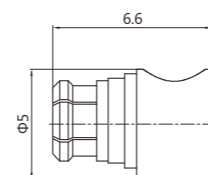
Technical Data

适用标准	Applicable Standards	
界面尺寸	Interface According To	IEC 61169-44 GB/T 11313-44
电气性能	Electrical Data	
阻抗	Impedance	50 Ω
频率范围	Frequency Range	DC to 40 GHz
驻波比	VSWR	≤ 1.50
插入损耗	Insertion Loss	≤ 0.1 √f(GHz) dB
绝缘电阻	Insulation Resistance	≥ 5 GΩ
内导体接触电阻	Center Contact Resistance	≤ 6.0 mΩ
外导体接触电阻	Out Contact Resistance	≤ 2.0 mΩ
测试电压	Test Voltage	500 V
机械性能	Mechanical Data	
插拔次数	Mating Cycles	≥ 500
接触力	Engagement Force	Full Detent 68N Max Limited Detent 45N Max Smooth Bore 9N Max
接触保持力	Contact Captivation	7 N min
环境性能	Environmental Data	
温度范围	Temperature Range	-55 °C - +155 °C
盐雾	Salt Mist	IEC 61169-1 Clause 9.4.6
稳态湿热	Hermetic	IEC 61169 Clause 9.4.5.2
材料	Materials	
外导体	Outer Contact	Brass Au Plating
内导体	Center Contact	Brass Au Plating
弹性接触件	Spring Loaded Contact Parts	CuBe2 Au Plating
压接管	Crimping Ferrule	Copper Alloy CuSnZn Plating
绝缘体	Dielectric	PTFE
垫片	Gasket	Rubber

SMP RF Coaxial Connectors

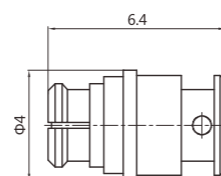
射频同轴连接器

Product No.	Cable Group	Plt	Imp
产品型号	适配电缆	镀层	阻抗
SMP	N/A	Au	50Ω



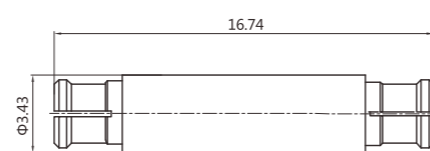
A.12-1

Product No.	Cable Group	Plt	Imp
产品型号	适配电缆	镀层	阻抗
SMP-01	N/A	Au	50Ω



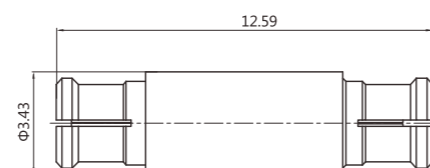
A.12-2

Product No.	Cable Group	Plt	Imp
产品型号	适配电缆	镀层	阻抗
SMP-02	N/A	Au	50Ω



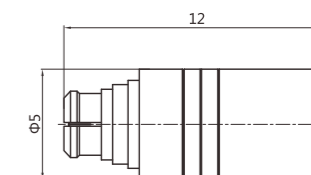
A.12-3

Product No.	Cable Group	Plt	Imp
产品型号	适配电缆	镀层	阻抗
SMP-03	N/A	Au	50Ω



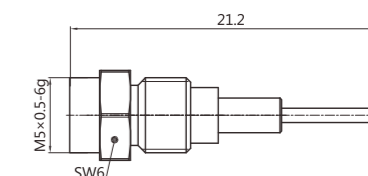
A.12-4

Product No.	Cable Group	Plt	Imp
产品型号	适配电缆	镀层	阻抗
SMP-04	N/A	Au	50Ω



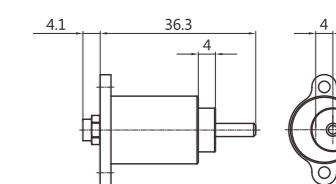
A.12-5

Product No.	Cable Group	Plt	Imp
产品型号	适配电缆	镀层	阻抗
SMPMF	N/A	Au	50Ω



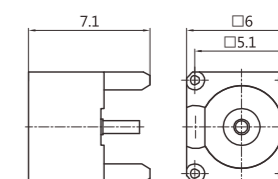
A.12-6

Product No.	Cable Group	Plt	Imp
产品型号	适配电缆	镀层	阻抗
WT-H1328-SMP	N/A	Au	50Ω



A.12-7

Product No.	Cable Group	Plt	Imp
产品型号	适配电缆	镀层	阻抗
SMPM,H-PCB	N/A	Au	50Ω



A.12-8

7/16

S7/16

N

TNC

BNC

1.6/5.6

SMA

SMB

SMC

MCX

BMA

SMP

1.0/2.3

ADAPTORS

SURGE
ARRESTORS

7/16

S7/16

N

TNC

BNC

1.6/5.6

SMA

SMB

SMC

MCX

BMA

SMP

1.0/2.3

ADAPTORS

SURGE
ARRESTORS

1.0/2.3 RF Coaxial Connectors

射频同轴连接器

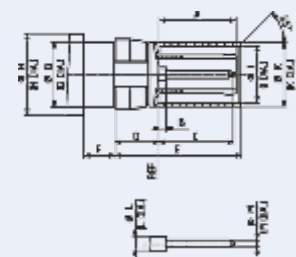
1.0/2.3型连接器是一种小型推入锁紧式连接器，特性阻抗为50Ω和70Ω。它广泛用于小型化的无线电通讯设备、数字配线装置、滑入式机构，积木单元及各类数据监控系统。其特点是体积小、重量轻、连接方便、性能可靠、耐振动，抗冲击。

1.0/2.3 connector is a small push-in locking type connector, whose characteristic impedances are 50Ω and 70Ω. It is widely used in the miniaturization of radio communications equipment, digital wiring devices, slide-in-mechanism, building block units and all kinds of data monitoring systems. It features small size, light weight, easy to access, reliable performance, resistance to vibration and shock.

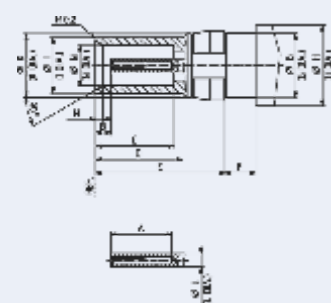
界面尺寸配合

Interface Mating Dimensions

插针连接器
Pin Connector



插孔连接器
Socket Connector



	PLUG(mm/inch)		JACK(mm/inch)	
	最小值	最大值	最小值	最大值
A	5.40/.213	5.70/.224	4.50/.177	—
B	—	1.15/.045	1.15/.045	1.45/.057
C	5.20/.205	5.50/.217	5.80/.228	5.90/.232
D	3.05/.120	3.20/.126	6.40/.252	6.50/.256
E	9.25/.364	9.35/.368	9.50/.374	9.60/.378
F	2.22/.087	2.40/.094	2.22/.087	2.40/.094
G	4.76/.187	4.79/.189	4.76/.187	4.79/.189
H	—	6.00/.236	—	6.00/.236
I	4.20/.165	4.28/.169	4.03/.159	4.15/.163
K	4.66/.183	4.78/.188	4.72/.186	4.75/.187
L	1.00/.039 nom.		1.00/.039 nom.	
M	0.48/.019	0.52/.020	0.50/.020	0.60/.024
N	—	—	3.00/.118	3.06/.120

技术参数

Technical Data

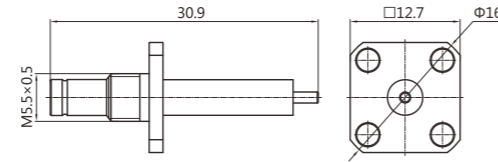
通用标准	Applicable Standards	
界面尺寸	Interface According To	IEC 60169-29 GB/T 11313-29
电气性能	Electrical Data	
阻抗	Impedance	50 Ω
频率范围	Frequency Range	DC to 10 GHz
回损	Return Loss	≥32dB (DC-1GHz) ≥23dB (1-4GHz) ≥16dB (4-10GHz)
插入损耗	Insertion Loss	≤ 0.1 √f(GHz) dB
绝缘电阻	Insulation Resistance	≥ 1000 MΩ
内导体接触电阻	Center Contact Resistance	≤ 4.0 mΩ
外导体接触电阻	Out Contact Resistance	≤ 2.5 mΩ
测试电压	Test Voltage	750 V

机械性能	Mechanical Data	
插拔次数	Mating Cycles	≥ 500
啮合力与分离力	Engaging And Disengaging Force	0.9-10 N
内导体保持力	Center Contact Captivation	≥ 10 N
环境性能	Environmental Data	
温度范围	Temperature Range	-40 °C - +85 °C
盐雾	Salt Mist	IEC 61169-1 Clause 9.4.6
气候试验	Climatic Test	IEC 60068-2-1 40/85/21
振动	Vibrations	IEC 60068-2-6
材料	Materials	
外导体	Outer Contact	Brass Au Plating
内导体	Center Contact	Brass Au Plating
弹性接触件	Spring Loaded Contact Parts	CuBe2 Au Plating
压接管	Crimping Ferrule	Copper Alloy CuSnZn Plating
绝缘体	Dielectric	PTFE
垫片	Gasket	Rubber

1.0/2.3 RF Coaxial Connectors

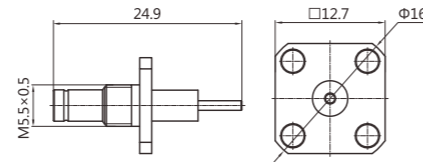
射频同轴连接器

Product No.	Cable Group	Plt	Imp
产品型号	适配电缆	镀层	阻抗
1.0/2.3-01	N/A	Au	50Ω



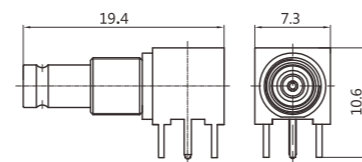
A.13-1

Product No.	Cable Group	Plt	Imp
产品型号	适配电缆	镀层	阻抗
1.0/2.3-02	N/A	Au	50Ω



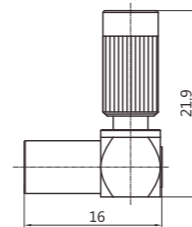
A.13-2

Product No.	Cable Group	Plt	Imp
产品型号	适配电缆	镀层	阻抗
1.0/2.3/FRH-PCB	N/A	Au	50Ω



A.13-3

Product No.	Cable Group	Plt	Imp
产品型号	适配电缆	镀层	阻抗
1.0/2.3-03	N/A	Au	50Ω



A.13-4

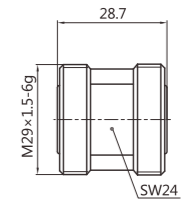
Adaptors

转接器

转接器是仪器测量和不同接口的线缆连接的必备产品。它分为相同类型间转接器和不同类型间转接器，其技术特性均与同类产品相同，可分别参阅。

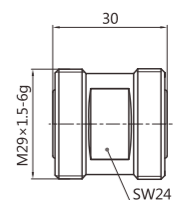
Adapter is essential product for instrument measurement of connections with cables of different interfaces. It is classified into the same type of adapters and different types of adapter, their technical characteristics are the same as those of similar products, for your respective reference.

Product No.	Cable Group	Plt	Imp
产品型号	适配电缆	镀层	阻抗
7/16F-7/16F	N/A	CuSnZn	50Ω



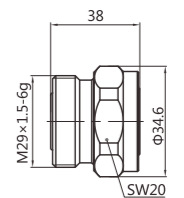
A.14-1

Product No.	Cable Group	Plt	Imp
产品型号	适配电缆	镀层	阻抗
7/16F-7/16F-01	N/A	CuSnZn	50Ω



A.14-2

Product No.	Cable Group	Plt	Imp
产品型号	适配电缆	镀层	阻抗
7/16M-7/16F	N/A	CuSnZn	50Ω



A.14-3

7/16

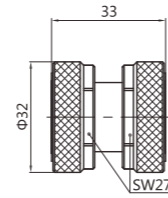
Adaptors

S7/16

转接器

N

Product No.	Cable Group	Plt	Imp
产品型号	适配电缆	镀层	阻抗
7/16M-7/16M	N/A	CuSnZn	50Ω

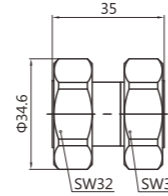


A.14-4

BNC

1.6/5.6

Product No.	Cable Group	Plt	Imp
产品型号	适配电缆	镀层	阻抗
7/16M-7/16M-01	N/A	CuSnZn	50Ω



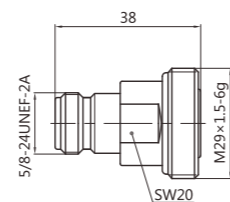
A.14-5

SMA

SMB

SMC

Product No.	Cable Group	Plt	Imp
产品型号	适配电缆	镀层	阻抗
NF-7/16F	N/A	CuSnZn	50Ω

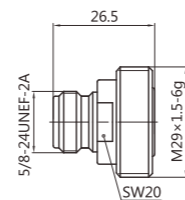


A.14-6

MCX

BMA

Product No.	Cable Group	Plt	Imp
产品型号	适配电缆	镀层	阻抗
NF-7/16F-01	N/A	CuSnZn	50Ω



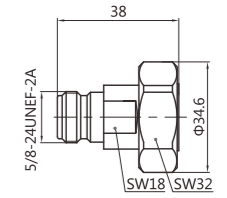
A.14-7

1.0/2.3

ADAPTORS

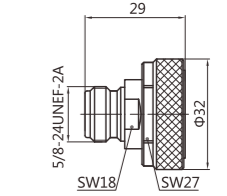
SURGE
ARRESTORS

Product No.	Cable Group	Plt	Imp
产品型号	适配电缆	镀层	阻抗
NF-7/16M	N/A	CuSnZn	50Ω



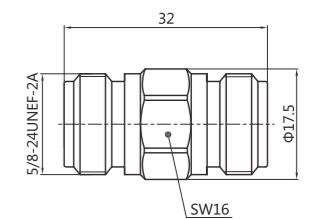
A.14-8

Product No.	Cable Group	Plt	Imp
产品型号	适配电缆	镀层	阻抗
NF-7/16M-01	N/A	CuSnZn	50Ω



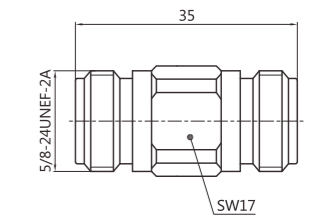
A.14-9

Product No.	Cable Group	Plt	Imp
产品型号	适配电缆	镀层	阻抗
NF-NF	N/A	CuSnZn	50Ω



A.14-10

Product No.	Cable Group	Plt	Imp
产品型号	适配电缆	镀层	阻抗
NF-NF-01	N/A	CuSnZn	50Ω



A.14-11

7/16

S7/16

N

TNC

BNC

1.6/5.6

SMA

SMB

SMC

MCX

BMA

SMP

1.0/2.3

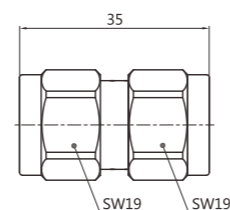
ADAPTORS

SURGE
ARRESTORS

Adaptors

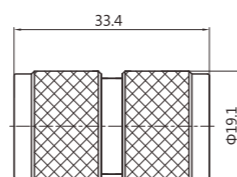
转接器

Product No.	Cable Group	Plt	Imp
产品型号	适配电缆	镀层	阻抗
NM-NM	N/A	CuSnZn	50Ω



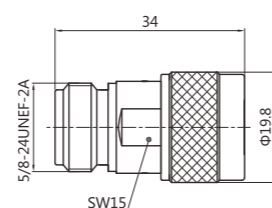
A.14-12

Product No.	Cable Group	Plt	Imp
产品型号	适配电缆	镀层	阻抗
NM-NM-01	N/A	CuSnZn	50Ω



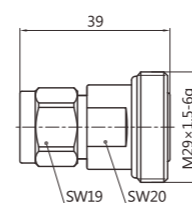
A.14-13

Product No.	Cable Group	Plt	Imp
产品型号	适配电缆	镀层	阻抗
NF-NM	N/A	CuSnZn	50Ω



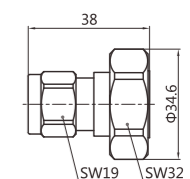
A.14-14

Product No.	Cable Group	Plt	Imp
产品型号	适配电缆	镀层	阻抗
NM-7/16F	N/A	CuSnZn	50Ω



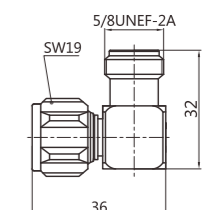
A.14-15

Product No.	Cable Group	Plt	Imp
产品型号	适配电缆	镀层	阻抗
NM-7/16M	N/A	CuSnZn	50Ω



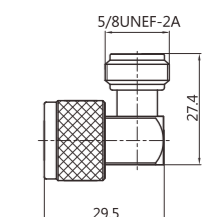
A.14-16

Product No.	Cable Group	Plt	Imp
产品型号	适配电缆	镀层	阻抗
NF-NM-R	N/A	CuSnZn	50Ω



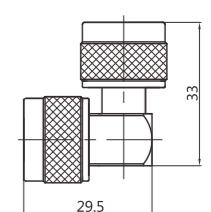
A.14-17

Product No.	Cable Group	Plt	Imp
产品型号	适配电缆	镀层	阻抗
NF-NM-R-01	N/A	CuSnZn	50Ω



A.14-18

Product No.	Cable Group	Plt	Imp
产品型号	适配电缆	镀层	阻抗
NM-NM-R	N/A	CuSnZn	50Ω



A.14-19

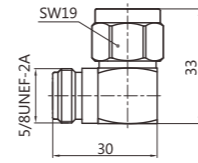
Adaptors

S7/16

转接器

N

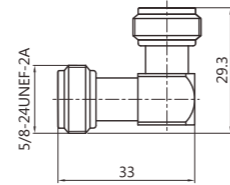
Product No.	Cable Group	Plt	Imp
产品型号	适配电缆	镀层	阻抗
NM-NF-R	N/A	CuSnZn	50Ω



A.14-20

BNC

Product No.	Cable Group	Plt	Imp
产品型号	适配电缆	镀层	阻抗
NF-NF-R	N/A	CuSnZn	50Ω



A.14-21

SMA

SMB

SMC

MCX

BMA

SMP

1.0/2.3

ADAPTORS

SURGE
ARRESTORS

Surge Arrestors

S7/16

避雷器

N

闪电雷击对无线电仪器设备意味着一场考验。可能在几微秒的瞬间，浪涌电压高达几十千伏/米，整个系统将受到巨大的负载，后果是设备的损坏。本公司生产的避雷器将起了电压开关的作用，是建设基站时首选的必备保护、预防性附件，正确的选用可确保系统高效运作。

Lightning strike means a test on radio equipment. Possibly within a few microseconds, the surge voltage goes up to tens of kilovolts / m, the entire system would bear a huge load, resulting in damage to the equipment. The arrester produced by company serves as a voltage switch which is the necessary protective, preventive device for building a base station, the correct choice can ensure the efficient operation of the system.

TNC

BNC

1.6/5.6

技术参数

Technical Data

适用标准	Applicable Standards	
界面尺寸	Interface According To	7/16M-To-7/16F NM-To-NF
温度范围	Temperature Range	-40 °C - +85 °C
电气性能	Electrical Data	
特性阻抗	Characteristic Impedance	50 Ω
频率范围	Frequency Range	800 - 2200 MHz
插入损耗	Insertion Loss	≤ 0.2 dB
冲击电流	Surge Current	30 kA (8/20 μs)
电压驻波比	Voltage Standing Wave Ratio	≤ 1.5
材料	Materials	
壳体	Body	Brass
插针	Contact Pin	Brass
弹性接触件	Elastic Contact	Beryllium Bronze
绝缘体	Insulator	PTFE
紧固件	Other Conductor	Brass
O型密封件	O-ring Sealing	Silastic Rubber

SMA

SMB

SMC

MCX

BMA

SMP

1.0/2.3

ADAPTORS

SURGE
ARRESTORS

7/16

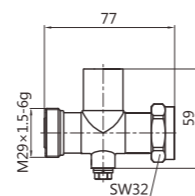
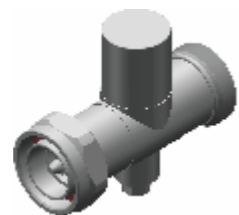
Surge Arrestors

S7/16

避雷器

N

Product No.	Cable Group	Plt	Imp
产品型号	适配电缆	镀层	阻抗
SD1-3	N/A	CuSnZn	50Ω



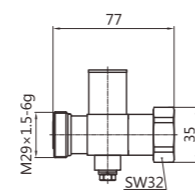
A.15-1

TNC

BNC

1.6/5.6

Product No.	Cable Group	Plt	Imp
产品型号	适配电缆	镀层	阻抗
SD1-7	N/A	CuSnZn	50Ω



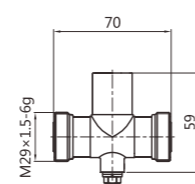
A.15-2

SMA

SMB

SMC

Product No.	Cable Group	Plt	Imp
产品型号	适配电缆	镀层	阻抗
SD2-1	N/A	CuSnZn	50Ω

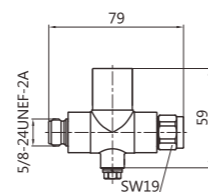


A.15-3

MCX

BMA

Product No.	Cable Group	Plt	Imp
产品型号	适配电缆	镀层	阻抗
SNI-3	N/A	CuSnZn	50Ω



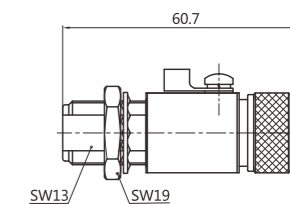
A.15-4

1.0/2.3

ADAPTORS

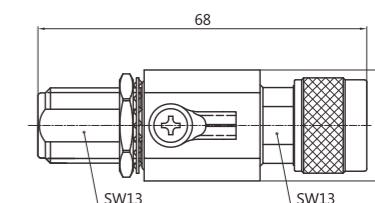
SURGE
ARRESTORS

Product No.	Cable Group	Plt	Imp
产品型号	适配电缆	镀层	阻抗
SDP-NM-NF-G/BHD	N/A	CuSnZn	50Ω



A.15-5

Product No.	Cable Group	Plt	Imp
产品型号	适配电缆	镀层	阻抗
SPD-NM-NF-G/BHD-B	N/A	CuSnZn	50Ω



A.15-6



Precision Connector 测试级连接器

测试级连接器广泛用于各种高精度设备，其具有较高的电气性能和很高的可靠性。测试级连接器采用0级界面设计，运用低反射的绝缘支撑。

Test grade connectors are widely used in various pieces of high-precision high-end equipment, which has a high electrical performance and high reliability. Test grade connectors adopt 0-grade interface design, and uses low-reflection insulating support.

B. Precision Connector 测试级连接器

B.1	71	N Precision Connector	N型测试级连接器
B.2	75	3.5mm Precision Connector	3.5mm型测试级连接器
B.3	79	2.92mm Precision Connector	2.92mm型测试级连接器
B.4	82	Adaptors	测试级转接器

N

N Precision Connector

测试级连接器

N测试级连接器特性阻抗为50Ω，其外直径7毫米。其在18 GHz全频段内有良好的数据表现。N测试级连接器设计为半刚性电缆连接器,是高性能柔性微波电缆组件和微波组件。

The characteristic impedance of N test grade connectors is 50Ω, whose outer diameter is 7 mm. It has good data performance in 18 GHz full band. N test grade connectors are designed to be semi-rigid cable connector, and it is a high performance flexible microwave cable assemblies and microwave components.

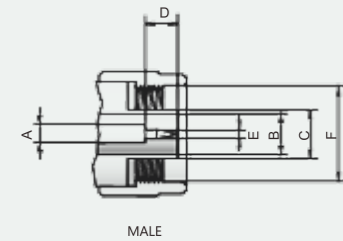
3.5mm

2.92mm

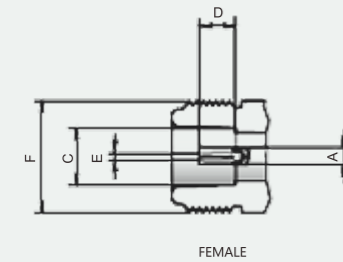
ADAPTORS

界面尺寸配合 Interface Mating Dimensions

插针连接器
Pin Connector



插孔连接器
Socket Connector



	MALE(stecker)		FEMALE(kuppler)	
	最小值	最大值	最小值	最大值
A	3.03	3.05	3.03	3.05
B	6.99	7.01	6.99	7.01
C	7.98	8.02	8.05	8.10
D	5.28	5.36	5.18	5.26
E	1.64	1.66	1.68	1.71
F	5/8-24UNEF-2B		5/8-24UNEF-2A	

技术参数

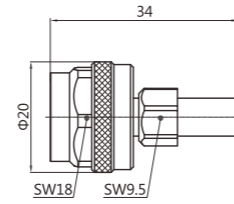
Technical Data

适用标准	Applicable Standards	
界面尺寸	Interface According To	IEC 60169-16
电气性能	Electrical Data	
阻抗	Impedance	50 Ω
频率范围	Frequency Range	DC to 18 GHz
回损	Return Loss	≥ 30 dB DC to 18 GHz
插入损耗	Insertion Loss	≤ 0.03 √f(GHz) dB
绝缘电阻	Insulation Resistance	≥ 5 GΩ
内导体接触电阻	Center Contact Resistance	≤ 1.0 mΩ
外导体接触电阻	Out Contact Resistance	≤ 1.0 mΩ
测试电压	Test Voltage	2500 V
射频泄露	Rf-leakage	≥ 90 dB DC to 1 GHz
机械性能	Mechanical Data	
插拔次数	Mating Cycles	≥ 500
结合扭矩	Coupling Torque	1.7 Nm
建议结合扭矩	Recommended Coupling Torque	0.7-1.10 Nm
内导体保持力	Center Contact Captivation	≥ 28 N
环境性能	Environmental Data	
温度范围	Temperature Range	-55 °C - +155 °C
盐雾	Salt Mist	IEC 61169 Clause 9.4.6
气候试验	Climatic Test	IEC 61169-1 55/155/21
冲击	Shock	IEC 61169 Clause 9.3.14
振动	Vibrations	IEC 61169 Clause 9.3.3
防护等级	Degree Of Protection	IEC 60529 IP68
材料	Materials	
外导体	Outer Contact	Stainless Steel Passivated
内导体	Center Contact	Brass Au Plating
弹性接触件	Spring Loaded Contact Parts	Bronze Au Plating
绝缘体	Dielectric	PTFE
垫片	Gasket	Rubber

N Precision Connector

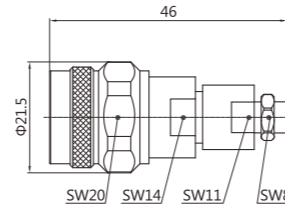
测试级连接器

Product No.	Imp
产品型号	阻抗
N	50Ω



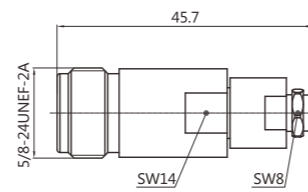
B.1-1

Product No.	Imp
产品型号	阻抗
N-01	50Ω



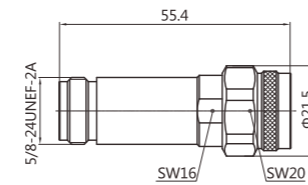
B.1-2

Product No.	Imp
产品型号	阻抗
N-02	50Ω



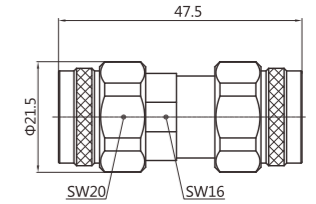
B.1-3

Product No.	Imp
产品型号	阻抗
N-03	50Ω



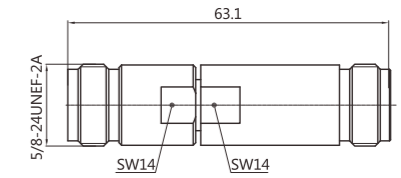
B.1-4

Product No.	Imp
产品型号	阻抗
N-04	50Ω



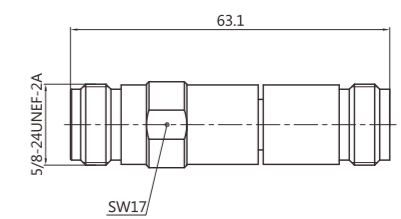
B.1-5

Product No.	Imp
产品型号	阻抗
N-05	50Ω



B.1-6

Product No.	Imp
产品型号	阻抗
N-06	50Ω



B.1-7

N

3.5mm

2.92mm

ADAPTORS

3.5mm Precision Connector

测试级连接器

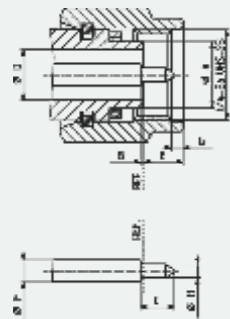
3.5mm 测试级连接器频率可达26.5GHz。这种连接器适用于半刚半柔性电缆和微波组件。3.5mm与SMA、2.92mm连接器相互匹配。由于空气介质的接口、耐用的结构和很好的重复性，使连接器的性能进一步增强。

3.5mm test grade connectors have frequencies up to 26.5GHz. This connector is suitable for semi-rigid cables and microwave components. 3.5mm matches SMA, 2.92mm connector. Because of the air medium interface, durable construction and good reproducibility, the performance of the connector is further enhanced.

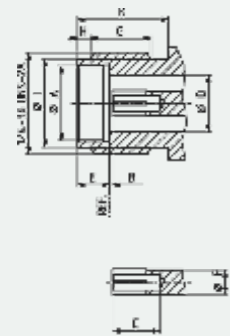
界面尺寸配合

Interface Mating Dimensions

插针连接器
Pin Connector



插孔连接器
Socket Connector



	PLUG(mm/inch)		JACK(mm/inch)	
	最小值	最大值	最小值	最大值
A	4.55/.179	4.58/.180	4.60/.181	4.63/.182
B	0.00/.000	0.08/.003	0.00/.000	0.08/.003
C	2.03/.080	2.29/.090	2.79/.110	3.18/.125
D	3.49/.138	3.51/.138	3.49/.138	3.51/.138
E	2.36/.093	3.56/.135	1.88/.074	1.98/.078
F	1.51/.060	1.52/.060	1.51/.060	1.52/.060
G	0.38/.015	1.14/.045	3.35/.132	4.62/.182
H	0.92/.036	0.93/.037	0.38/.015	1.14/.045
I	—	—	5.30/.209	5.40/.213
K	—	—	5.54/.218	—

技术参数

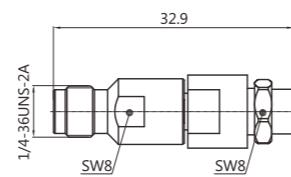
Technical Data

适用标准	Applicable Standards	
界面尺寸	Interface According To	IEC 60169-23
电气性能	Electrical Data	
阻抗	Impedance	50 Ω
频率范围	Frequency Range	DC to 26.5 GHz
驻波比	VSWR	1.07 (DC to 26.5 GHz)
插入损耗	Insertion Loss	≤ 0.03 √f(GHz) dB
绝缘电阻	Insulation Resistance	≥ 5 GΩ
内导体接触电阻	Center Contact Resistance	≤ 3.0 mΩ
外导体接触电阻	Out Contact Resistance	≤ 2.0 mΩ
测试电压	Test Voltage	1000 V
机械性能	Mechanical Data	
插拔次数	Mating Cycles	≥ 500
结合扭矩	Coupling Test Torque	1.7 Nm
建议结合扭矩	Recommended Torque	0.80-1.10 Nm
内导体保持力	Center Contact Captivation	≥ 27 N
环境性能	Environmental Data	
温度范围	Temperature Range	-40 °C - +85 °C
盐雾	Salt Mist	IEC 61169 Clause 9.4.6
冲击	Shock	IEC 61169 Clause 9.3.14
振动	Vibrations	IEC 61169 Clause 9.3.3
材料	Materials	
外导体	Outer Contact	Stainless Steel Passivated
内导体	Center Contact	Brass Au Plating
弹性接触件	Spring Loaded Contact Parts	Bronze Au Plating
绝缘体	Dielectric	PTFE
垫片	Gasket	Rubber

3.5mm Precision Connector

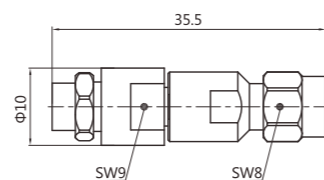
测试级连接器

Product No.	Imp
产品型号	阻抗
3.5	50Ω



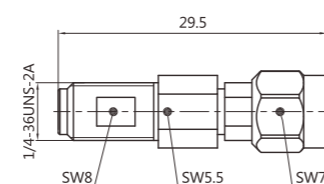
B.2-1

Product No.	Imp
产品型号	阻抗
3.5-01	50Ω



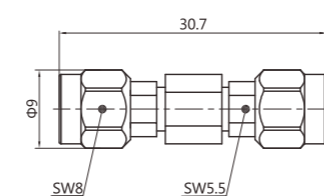
B.2-2

Product No.	Imp
产品型号	阻抗
3.5-02	50Ω



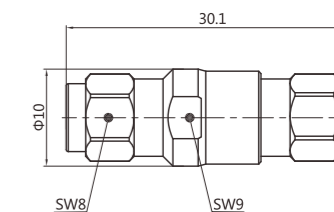
B.2-3

Product No.	Imp
产品型号	阻抗
3.5-03	50Ω



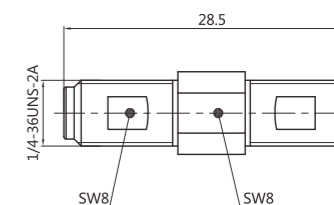
B.2-4

Product No.	Imp
产品型号	阻抗
3.5-04	50Ω



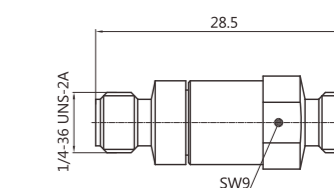
B.2-5

Product No.	Imp
产品型号	阻抗
3.5-05	50Ω



B.2-6

Product No.	Imp
产品型号	阻抗
3.5-06	50Ω



B.2-7

N

3.5mm

2.92mm

ADAPTORS

2.92mm Precision Connector

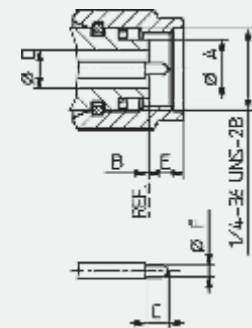
测试级连接器

2.92mm测试级连接器频率可达40GHz。它们可以与SMA和3.5mm系列产品匹配使用。具有高机械稳定性和出色的可重复性。缩短的凸形插针确保了非破坏性的组装过程。

2.92mm test grade connectors have frequencies up to 40GHz. They can be used with SMA and 3.5mm series products. It has a high mechanical stability and excellent repeatability. Male pins shortened ensure nondestructive assembly process.

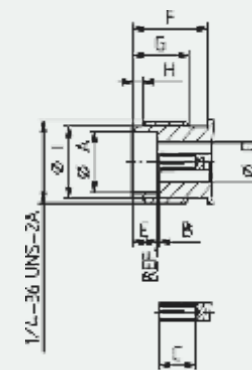
界面尺寸配合 Interface Mating Dimensions

插针连接器
Pin Connector



	PLUG(mm/inch)		JACK(mm/inch)	
	最小值	最大值	最小值	最大值
A	4.53/.178	4.57/.180	4.60/.181	4.64/.183
B	0.00/.000	0.13/.005	0.00/.000	0.13/.005
C	1.55/.061	1.65/.065	2.80/.110	—
D	2.89/.114	2.95/.116	2.89/.114	2.95/.116
E	—	3.28/.129	1.88/.074	1.98/.078
F	0.91/.036	0.94/.037	5.90/.232	—
G	—	—	4.40/.173	—
H	—	—	0.70/.028	0.90/.036
I	—	—	5.30/.208	5.40/.213

插孔连接器
Socket Connector



技术参数

Technical Data

通用标准	Applicable Standards	
界面尺寸	Interface According To	IEC 61169-35 GB/T 11313.35
电气性能	Electrical Data	
阻抗	Impedance	50 Ω
频率范围	Frequency Range	DC to 40 GHz
回损	Return Loss	≥ 23 dB (DC-40 GHz)
插入损耗	Insertion Loss	≤ 0.04 √f(GHz) dB
绝缘电阻	Insulation Resistance	≥ 5 GΩ
内导体接触电阻	Center Contact Resistance	≤ 3.0 mΩ
外导体接触电阻	Out Contact Resistance	≤ 2.0 mΩ
测试电压	Test Voltage	750 V
射频泄露	Rf-leakage	≥ 100 dB up to 1 GHz
机械性能	Mechanical Data	
插拔次数	Mating Cycles	≥ 500
结合扭矩	Coupling Torque	1.7 Nm
建议结合扭矩	Recommended Coupling Torque	0.80-1.10 Nm
内导体保持力	Center Contact Captivation	≥ 22 N
环境性能	Environmental Data	
温度范围	Temperature Range	-40 °C - +85 °C
盐雾	Salt Mist	IEC 61169 Clause 9.4.6
冲击	Shock	IEC 61169 Clause 9.3.14
振动	Vibrations	IEC 61169 Clause 9.3.3
材料	Materials	
外导体	Outer Contact	Stainless Steel Passivated
内导体	Center Contact	Brass Au Plating
弹性接触件	Spring Loaded Contact Parts	Bronze Au Plating
绝缘体	Dielectric	PTFE
垫片	Gasket	Rubber

N

3.5mm

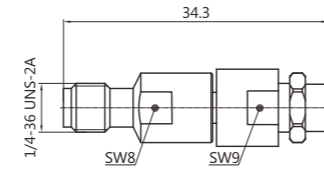
2.92mm

ADAPTORS

2.92mm Precision Connector

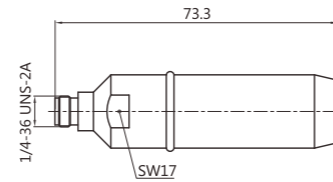
测试级连接器

Product No.	Imp
产品型号	阻抗
2.92	50Ω



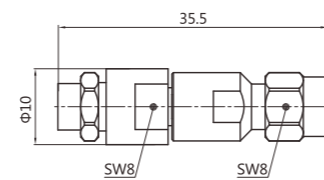
B.3-1

Product No.	Imp
产品型号	阻抗
2.92-01	50Ω



B.3-2

Product No.	Imp
产品型号	阻抗
2.92-02	50Ω



B.3-3

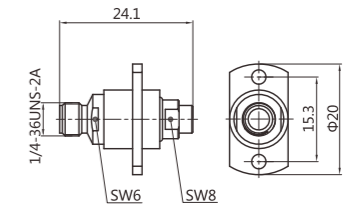
Adaptors

测试级转接器

测试级转接器，具有高的机械稳定性和出色的可重复性，广泛的运用于各种测试器件。

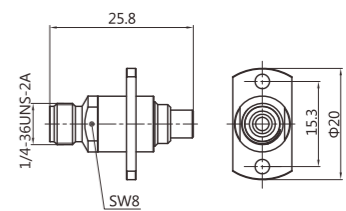
Test level adapter, having a high mechanical stability and excellent repeatability, is widely used in a variety of test devices.

Product No.	Imp
产品型号	阻抗
3.5-SMP	50Ω



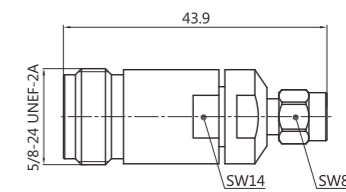
B.4-1

Product No.	Imp
产品型号	阻抗
3.5-SMP-01	50Ω



B.4-2

Product No.	Imp
产品型号	阻抗
3.5-N	50Ω



B.4-3

N

3.5mm

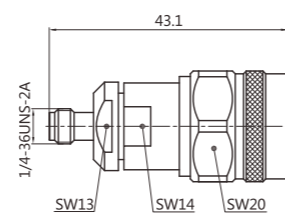
2.92mm

ADAPTORS

Adaptors

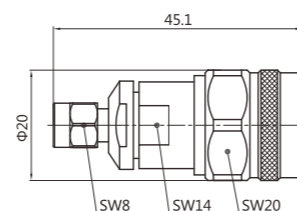
测试级转接器

Product No.	Imp
产品型号	阻抗
3.5-N-01	50Ω



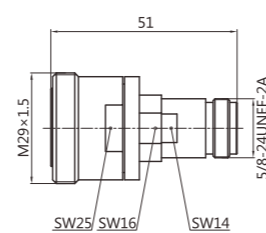
B.4-4

Product No.	Imp
产品型号	阻抗
3.5-N-02	50Ω



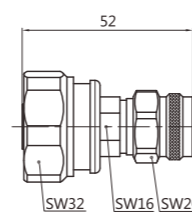
B.4-5

Product No.	Imp
产品型号	阻抗
N-7/16	50Ω



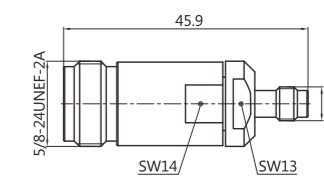
B.4-6

Product No.	Imp
产品型号	阻抗
N-7/16-01	50Ω



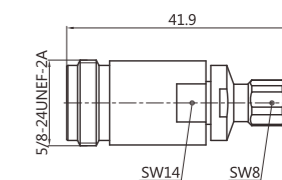
B.4-7

Product No.	Imp
产品型号	阻抗
N-SMA	50Ω



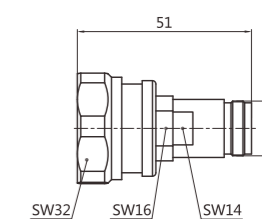
B.4-8

Product No.	Imp
产品型号	阻抗
N-SMA-01	50Ω



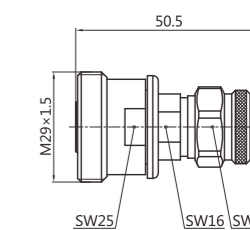
B.4-9

Product No.	Imp
产品型号	阻抗
N-7/16-02	50Ω



B.4-10

Product No.	Imp
产品型号	阻抗
N-7/16-03	50Ω

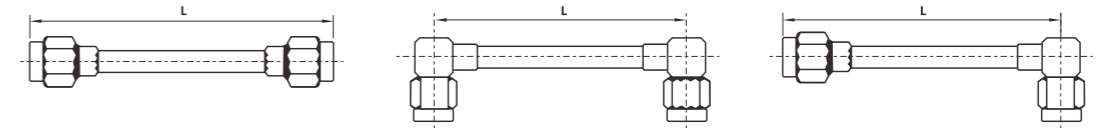


B.4-11

Cable-Assembly 电缆组件

电缆组件适用于机柜与模块之间、机柜与机柜之间、天线与馈缆之间以及馈缆与机柜之间的连接。电缆组件型号、品种繁多，用户除选择标准电缆长度外，可提出特殊要求的规格长度。

Cable assembly is applicable to connections between the cabinet and modules, cabinet and cabinet, antenna and feeder cables, feed cable and cabinet. Cable assembly is various in their types and kinds, so in addition to standard cable length, the users can also require special length and specifications.



c. Cable-Assembly		电缆组件
C.1	87	Corrugated Cable Assembly 波纹管跳线
C.2	89	Flexible Cable Assembly 柔性电缆组件
C.3	91	Semi-flexible/Semi-rigid Cable Assembly 半柔/半刚电缆组件
C.4	95	Testing Cable Assembly 测试级电缆组件

Corrugated Cable Assembly

波纹管跳线

DC-7.5GHz.低损耗，低互调，通常用在室外长距离传输的无线基础设施线上。现有的电缆线制造使用螺旋（超柔性）或环状/环形（柔性）铜管外导体。

DC-7.5GHz. with low loss, low intermodulation, is often used in outdoor wireless infrastructure lines for long distance transmission. In existing cable manufacture, people use spiral (super flexible) or ring-shaped (flexible) brass outer conductor.

技术参数 Technical Data

Product No. 产品型号	Connector 1 接头1	Connector 2 接头2	Cable 电缆	Frequency Range 频率范围	VSWR 电压驻波比	PIM3 三阶互调
NM-NM-Lm NM-NF-Lm NF-NF-Lm	N	N	1/4" 1/4" S 3/8" 3/8" S 1/2" 1/2" S	DC - 3 GHz	≤ 1.15	≤ -155 dBc @ 2 × 43 dBm
Product No. 产品型号	Connector 1 接头1	Connector 2 接头2	Cable 电缆	Frequency Range 频率范围	VSWR 电压驻波比	PIM3 三阶互调
NM-7/16M-Lm NM-7/16F-Lm NF-7/16M-Lm NF-7/16F-Lm	N	7/16	1/4" 1/4" S 3/8" 3/8" S 1/2" 1/2" S	DC - 3 GHz	≤ 1.12	≤ -160dBc@2×43dBm
Product No. 产品型号	Connector 1 接头1	Connector 2 接头2	Cable 电缆	Frequency Range 频率范围	VSWR 电压驻波比	PIM3 三阶互调
7/16M-7/16M-Lm 7/16F-7/16M-Lm 7/16F-7/16F-Lm	7/16	7/16	1/4" 1/4" S 3/8" 3/8" S 1/2" 1/2" S	DC - 3 GHz	≤ 1.15	≤ -165 dBc @ 2 × 43 dBm

Product 产品型号	Frequency 频率范围
DF-DF-H-YD12.L	0-7.5GHz
VSWR 电压驻波比	PIM3 三阶交调
≤1.10(DC-2.2GHz)	≤-165dBc (@900MHz、1800MHz)



C.1-1

Product 产品型号	Frequency 频率范围
DM-DM-H-YD12.L	0-7.5GHz
VSWR 电压驻波比	PIM3 三阶交调
≤1.10(DC-2.2GHz)	≤-165dBc (@900MHz、1800MHz)



C.1-2

Product 产品型号	Frequency 频率范围
DM-R-DM-H-YD9.L	0-11GHz
VSWR 电压驻波比	PIM3 三阶交调
≤1.10(DC-2.2GHz)	≤-165dBc (@900MHz、1800MHz)



C.1-3

Product 产品型号	Frequency 频率范围
NF-NF-H-YD12.L	0-11GHz
VSWR 电压驻波比	PIM3 三阶交调
≤1.10(DC-2.2GHz)	≤-155dBc (@900MHz、1800MHz)



C.1-4

波纹管跳线

柔性电缆组件

Flexible Cable Assembly

柔性电缆组件

普通柔性电缆组件具有重量轻、柔性好等特点。具体可分为RG电缆组件系列、国产SFF电缆组件、国产SYV电缆组件三大系列。广泛应用于测试仪器，移动通讯，雷达等领域。

Ordinary flexible cable assembly features light weight, flexible, and other characteristics. It is classified into RG cable assemblies series, Chinese SFF cable assemblies, Chinese SYV cable assemblies three series. It is widely used in test equipment, mobile communications, radar and other fields.

柔性电缆组件组合

Connector 连接器	Flexible Cable 柔性电缆
SMP	
SMA	RG174 RG223
SMB	RG179(70Ω) RG59
MCX	RG316 RG6
BNC	RG58 RG393
TNC	RG141 RG214
N	
S7/16	
7/16	

Product 产品型号	Frequency 频率范围
L32FX-5DFB-NMX-5DFB	0-7.5GHz
VSWR 电压驻波比	Insertion Loss 插损
≤1.25(1.8-2.7GHz)	≤0.45×L+0.1×2dB



C.2-1

Product 产品型号	Frequency 频率范围
3.5F-3.5F-X-RG142	0-6GHZ
VSWR 电压驻波比	PIM3 三阶交调
≤1.20(DC-3GHz)	—



C.2-2

Product 产品型号	Frequency 频率范围
NM-NM-X-RG142	0-4GHz
VSWR 电压驻波比	PIM3 三阶交调
≤1.10(DC-3GHz)	—



C.2-3

Product 产品型号	Frequency 频率范围
BNC-BNC-Y-RG58	0-6GHz
VSWR 电压驻波比	PIM3 三阶交调
≤1.20(DC-3GHz)	—



C.2-4

Product 产品型号	Frequency 频率范围
MCXF-MCXF-Y-RG316	0-4GHz
VSWR 电压驻波比	PIM3 三阶交调
≤1.15(DC-2.5GHz)	—



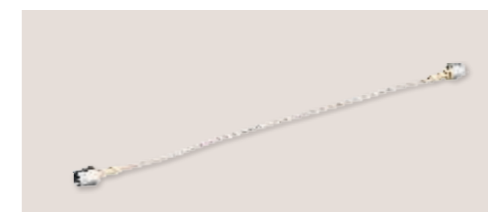
C.2-5

Product 产品型号	Frequency 频率范围
SMAM-SMA-X-RG142	0-4GHz
VSWR 电压驻波比	PIM3 三阶交调
≤1.20(DC-2.5GHz)	—



C.2-6

Product 产品型号	Frequency 频率范围
SMAM-SAMA-Y-RG316	0-4GHz
VSWR 电压驻波比	PIM3 三阶交调
≤1.20(DC-2.5GHz)	—



C.2-7

波纹管跳线

柔性电缆组件

半柔/半刚电缆组件

测试级电缆组件

Semi-flexible/Semi-rigid Cable Assembly

半柔/半刚电缆组件

半柔、半刚组件低损耗，衰减稳定性好，电缆屏蔽接近于理论值，优于-120dB，无信号串扰，驻波小，机械相位稳定性好，半刚电缆组件频率可达DC-18GHz，可根据用户的需求弯曲成一定形状。广泛应用于医疗设备，测试仪表，低温超导等领域。

Semi-soft, semi-rigid components have low loss, good attenuation stability, whose cable shield is close to the theoretical value, better than -120dB, no signal crosstalk, little standing wave, good mechanical phase stability, semi-rigid cable assemblies have frequencies up to DC-18GHz, can be bent into a certain shape according to the needs of users. It is widely used in medical equipment, test instruments, low-temperature superconductivity and other areas.

半柔/半刚电缆组件组合

Connector 连接器	Semi-rigid/flexible Cable 柔性电缆
SMP	RG145 RG402(141) RG401(250) RG400
SMA	
SMB	
MCX	
BNC	
TNC	
N	
S7/16	
7/16	

Product 产品型号	Frequency 频率范围
BMAF.H-RG402.L	0-7.5GHz

VSWR 电压驻波比	Phase Difference 相位差
≤1.20(1.8-2.7GHz)	±1.5°



C.3-1

Product 产品型号	Frequency 频率范围
L32MF-H01-RG402(四芯).L	0-7.5GHz

VSWR 电压驻波比	Insertion Loss 插损
≤1.25(1.8-2.7GHz)	≤0.45×L+0.1×2dB



C.3-2

Product No. 产品型号	Frequency 频率范围
L32MF-H01-RG402(五芯).L	0-7.5GHz

VSWR 电压驻波比	Insertion Loss 插损
≤1.25(1.8-2.7GHz)	≤0.45×L+0.1×2dB



C.3-3

Product 产品型号	Frequency 频率范围
NM-F-H-RG141.L	0-7.5GHz

VSWR 电压驻波比	Phase Difference 相位差
≤1.0(DC-3GHz)	±1.5°



C.3-4

Product 产品型号	Frequency 频率范围
NM-NM-H-RG141.L	0-6GHz

VSWR 电压驻波比	PIM3 三阶交调
≤1.10(DC-3GHz)	≤-155dBc (@900MHz, 1800MHz)



C.3-5

波纹管跳线

柔性电缆组件

半柔/半刚电缆组件

测试级电缆组件

Semi-flexible/Semi-rigid Cable Assembly

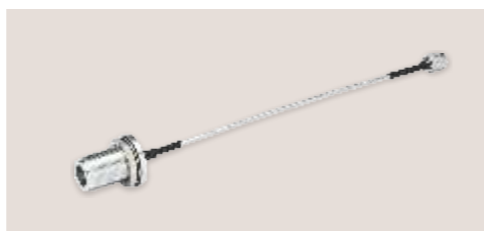
半柔/半刚电缆组件

Product 产品型号	Frequency 频率范围
NM-NM-H-RG141L-01	0-11GHz
VSWR 电压驻波比	PIM3 三阶交调
≤1.12(0.69-2.7GHz)	≤-155dBc (@900MHz, 1800MHz)



C.3-6

Product 产品型号	Frequency 频率范围
NM-SMAM-H-RG405L	0-7.5GHz
VSWR 电压驻波比	PIM3 三阶交调
≤1.15(DC-3GHz)	—



C.3-7

Product 产品型号	Frequency 频率范围
SMAM-MCXF-H-RG402L	0-7.5GHz
VSWR 电压驻波比	PIM3 三阶交调
≤1.15(DC-3GHz)	—



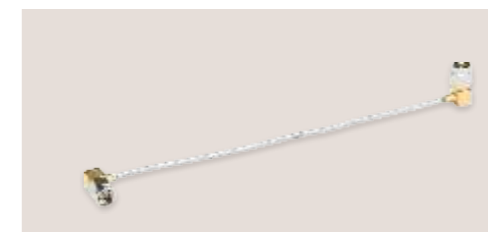
C.3-8

Product 产品型号	Frequency 频率范围
SMAM-R-SMAM-H-RG141L	0-11GHz
VSWR 电压驻波比	PIM3 三阶交调
≤1.20(DC-3GHz)	—



C.3-9

Product 产品型号	Frequency 频率范围
SMAM-R-SMAM-R-H-RG141L	0-18GHz
VSWR 电压驻波比	PIM3 三阶交调
≤1.10(DC-3GHz)	—



C.3-10

Product 产品型号	Frequency 频率范围
Y02-RG405	0-4GHz
VSWR 电压驻波比	PIM3 三阶交调
≤1.30(DC-3GHz)	—



C.3-11

波纹管跳线

柔性电缆组件

半柔/半刚电缆组件

测试级电缆组件

Test Cable Assembly

测试级电缆组件

测试电缆组件具有良好的电性能，坚固耐用、卓越的阻抗、耐磨损、耐腐蚀，是专门为测试测量领域而设计。电缆组件视匹配的连接而定，工作频率最高可达26.5GHz。

Test cable assembly is durable and has good electrical performance, excellent impedance, good abrasion resistance, corrosion resistance, is specifically designed for test and measurement. Cable assembly follows the mating connector, and its maximum operating frequency can go up to 26.5GHz.

测试级电缆组件

Connector 1 接头1	Connector 2 接头2	Cable 电缆	Frequency Range 频率范围	VSWR 电压驻波比
2.92	2.92	A-flex 086/141/250/400 SFD147A/B, SFD210A/B SFD32051, SFD311A	DC to 40 GHz	1.44 to 40 GHz
2.92	3.5	A-flex 086/141/250/400 SFD147A/B, SFD210A/B SFD32051, SFD311A	DC to 26.5 GHz	1.44 to 40 GHz
3.5	3.5	A-flex 086/141/250/400 SFD147A/B, SFD210A/B SFD32051, SFD311A	DC to 26.5 GHz	1.35 to 40 GHz
3.5	N(PRECISION)	A-flex 086/141/250/400 SFD147A/B, SFD210A/B SFD32051, SFD311A	DC to 18 GHz	1.35 to 40 GHz
N(PRECISION)	N(PRECISION)	A-flex 086/141/250/400 SFD147A/B, SFD210A/B SFD32051, SFD311A	DC to 18 GHz	1.25 to 18 GHz

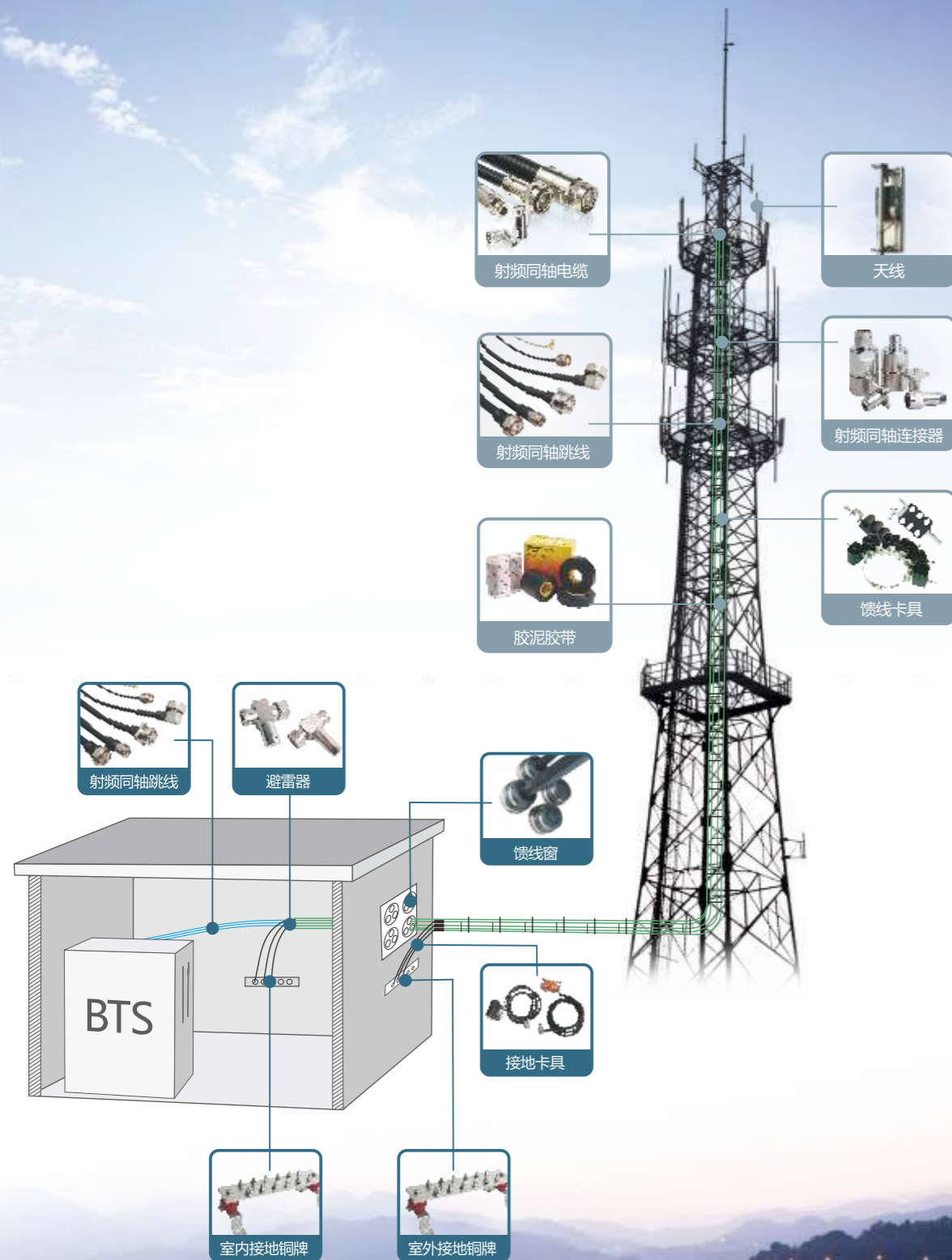


电气性能	Electrical Data	
三阶互调	IM3 Passive Intermediation	≤ -165 dBc @ 2 × 43 dBm, N TypeDIN头可达到PIM(dBc ≤ -170 dBc @ 2 × 43 dBm)
频率	Frequency	DC - 3 GHz; DC - 6 GHz; DC - 18 GHz(N type)
驻波	VSWR	≤ 1.1 @ 3 Ghz, ≤ 1.15 @ 6 Ghz, ≤ 1.25 @ 18 GHz
阻抗	Impedance	50 Ω
屏蔽效率	Shielding Effectiveness	< -90 dB @ 3 GHz
插损	Insertion Loss,dB	< 0.6 dB/m @ 3 GHz(Inc. Connector), < 0.9 dB/m @ 6GHz(Incl. Connector) < 1.75 dB @ 18 GHz(Inc. Connector)
物理及机械特性	Physical & Mechanical Specifications	
长度	Length	可订制任意长度 Custom Available
连接器	Connector Type	N 7/16(DIN)
连接器插拔次数	Mating Life Cycle	> 500
公差	Length Tolerances +/-	1.5 % of Length
工作温度	Work Temperature	-40 °C - +85 °C
存储温度	Storage Temperature	-35 °C - +45 °C



电气性能	Electrical Data	
三阶互调	Im3 Passive Intermediation	-160 dBc - 170 dBc @ 2 × 43 dBm
频率	Frequency	DC - 10 Ghz
驻波	VSWR	1.15 @ DC - 3 Ghz, 1.2 @ 3-7 Ghz, 1.3 @ 8-10 Ghz
阻抗	Impedance	50Ω
屏蔽效率	Shielding Effectiveness	> -100 dB
物理及机械特性	Physical & Mechanical Specifications	
长度	Length	可订制任意长度 Custom Available
连接器	Connector Type	N 7/16(DIN)
连接器插拔次数	Mating Life Cycle	> 500
公差	Length Tolerances +/-	1.5% of Length
工作温度	Work Temperature	-40°C - +85 °C
存储温度	Storage Temperature	-35°C - +45 °C

Attachment 附件



天馈附件产品主要包括接头保护盒、馈线卡、接地卡、接地铜排、馈线窗、避雷器支架、标识牌、扎带、胶泥、胶带等，主要用于通信基站、直放站、室内覆盖系统，以及无线寻呼、微波通信系统中，室内以及地铁和隧道通信中。

Antenna feeder accessory products include joint protection box, feeder clamp, grounding kit, ground copper bar, feeder window, arrester bracket, signboard, cable ties, clay, tape, etc., mainly for communication base stations, RPT, indoor coverage system and wireless paging, microwave communications systems(indoor as well as subway and tunnel communications).

D. Attachment 附件

D.1	99	Feeder Window	馈线窗
D.2	101	Feeder Card	馈线卡
D.3	105	Feeder Grounding	馈线接地卡
D.4	109	Ground Copper Bar	接地铜排
D.5	110	Arrester Bracket	避雷器支架

馈线窗

馈线卡

馈线接地卡

接地铜排

避雷器支架

Feeder Window

馈线窗

用于各类线缆及光缆穿墙入室前的密封处理，具有密封性好，体积小，重量轻，强度高，防火、防尘，安装方便等特性。产品选用304、201、铝镁合金及防老化橡胶为主要材料，质量可靠。

It is used for all kinds of cable and fiber optic cables' sealing before going through walls, features good sealing, small size, light weight, high strength, fireproofing, dustproof, easy installation. The product selects 304, 201, magnesium alloy and anti-aging rubber as the main material, with reliable quality.

技术参数

Technical Data

可用标准	Applicable Standards	
温度范围	Temperature Range	-55°C - +85°C
电气性能	Electrical Data	
抗老化	Defend Aging	300 H
防尘防水	Dustproof Waterproof	IP56级
材料	Materials	
安装板	Fixing plate	Stainless steel
固定座	Fixing seat	Rubber
穿孔板	Hole plate	Rubber
密封塞	Airproof stopper	Rubber
喉箍	Hoop	Stainless steel

Material Type	Material Name
物料规格	物料名称
WTC1-200*400-2-L	200*400固定板式馈线窗2孔(2-7/8**3)(铝合金)
WTC1-400*400-4-G	400*400固定板式馈线窗4孔(4-7/8**3)
WTC1-400*500-6-G	400*500固定板式馈线窗6孔(6-7/8**3)
WTC1-500*500-9-G	500*500固定板式馈线窗9孔(9-7/8**3)



D.1-1 喉箍型馈线窗

Material Type	Material Name
物料规格	物料名称
WTC3-400*400-4-G	400*400固定板式馈线窗4孔(4-7/8**3)
WTC3-400*500-6-G	400*500固定板式馈线窗6孔(6-7/8**3)
WTC3-500*500-9-G	500*500固定板式馈线窗9孔(9-7/8**3)



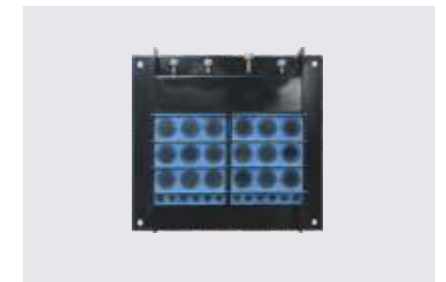
D.1-2 螺旋型馈线窗

Material Type	Material Name
物料规格	物料名称
WTC4-333*250	333*250夹板式馈线窗18孔



D.1-3 夹板型馈线窗

Material Type	Material Name
物料规格	物料名称
WTC2-310*350-30-G	310*350可变径馈线窗30孔(18-7/8",12-1/2")



D.1-4 可变径式馈线窗

Material Type	Material Name
物料规格	物料名称
WTC1-400*400-4-G	400*400固定板式馈线窗4孔(4-7/8**3)



D.1-5 橡胶筒型馈线窗

馈线窗

馈线卡

Feeder Card

馈线卡

馈线卡具适用于微波及移动通信缆线固定之用。卡箍采用改性聚丙烯或ABS料一次性注塑成型，304材料表面钝化处理；Q235和201材料表面达克罗处理，产品质量达到国际同类产品先进水平。

Feeder clamp is suitable for fixation of microwave and mobile communications cables. Clamps are made of modified polypropylene or ABS material with one-time injection molding, 304 material surface undergoes passivating treatment; Q235 and 201 material surface undergoes Dacromet treatment, and the product quality has reached international advanced level.

技术参数

Technical Data

抱箍型

名称	Name	材料	Material
U型件	U-piece	不锈钢	Stainless steel/Dacrotized
紧固件	Fastening	不锈钢	Stainless steel/Dacrotized
抱箍	Embrace hoop	不锈钢	Stainless steel/Dacrotized
橡胶固定座	Rubber Fix Seat	橡胶	Rubber

泄露型

名称	Name	材料	Material
线卡	Line card	增强尼龙66	Strengthen Nylon 66
卡座	Card seat	增强尼龙66	Strengthen Nylon 66
螺栓	Bolt	不锈钢或Q235碳钢	Stainless Steel/Q235Dacrotized
螺管	Spiral tube	不锈钢或Q235碳钢	Stainless Steel/Q235Dacrotized
膨胀螺栓组件	Expansion bolt assembly	不锈钢或Q235碳钢	Stainless Steel/Q235Dacrotized

穿芯型

名称	Name	材料	Material
U型组件	U-piece	不锈钢或Q235碳钢	Stainless Steel/Q235Dacrotized
紧固件	Fastening	不锈钢或Q235碳钢	Stainless Steel/Q235Dacrotized
塑料片	Plastic patch	改性聚丙烯/ABS工程塑料	Modified polypropylene or ABS-Modified Plastic

Material Type	Material Name	Material Type	Material Name
物料规格	物料名称	物料规格	物料名称
WTKJ-1/2"S-1-B01	1/2"S单联	WTKJ-7/8"-2-A01	7/8双联
WTKJ-1/2"S-2-B01	1/2S双联	WTKJ-7/8"-2-B01	7/8双联
WTKJ-1/2"S-2-C01	1/2S双联	WTKJ-7/8"-2-C01	7/8双联
WTKJ-1/2"S-3-B01	1/2S三联	WTKJ-7/8"-3-A01	7/8三联
WTKJ-1/2"-1-A01	1/2单联	WTKJ-7/8"-3-B01	7/8三联
WTKJ-1/2"-1-B01	1/2单联	WTKJ-7/8"-3-C01	7/8三联
WTKJ-1/2"-1-C01	1/2单联	WTKJ-1.1/4"-1-A01	5/4单联
WTKJ-1/2"-2-A01	1/2双联	WTKJ-1.1/4"-1-B01	5/4单联
WTKJ-1/2"-2-B01	1/2双联	WTKJ-1.1/4"-1-C01	5/4单联
WTKJ-1/2"-2-C01	1/2双联	WTKJ-1.1/4"-2-A01	5/4双联
WTKJ-1/2"-3-A01	1/2三联	WTKJ-1.1/4"-2-B01	5/4双联
WTKJ-1/2"-3-B01	1/2三联	WTKJ-1.1/4"-2-C01	5/4双联
WTKJ-1/2"-3-C01	1/2三联	WTKJ-1.1/4"-3-A01	5/4三联
WTKJ-1/4"-1-B01	1/4单联	WTKJ-1.1/4"-3-B01	5/4三联
WTKJ-1/4"-2-B01	1/4双联	WTKJ-1.1/4"-3-C01	5/4三联
WTKJ-1/4"-3-B01	1/4三联	WTKJ-1.5/8"-1-A01	13/8单联
WTKJ-3/8"-1-A01	3/8单联	WTKJ-1.5/8"-1-B01	13/8单联
WTKJ-3/8"-1-B01	3/8单联	WTKJ-1.5/8"-1-C01	13/8单联
WTKJ-3/8"-2-B01	3/8双联	WTKJ-1.5/8"-2-A01	13/8双联
WTKJ-3/8"-2-C01	3/8双联	WTKJ-1.5/8"-2-B01	13/8双联
WTKJ-3/8"-3-B01	3/8三联	WTKJ-1.5/8"-2-C01	13/8双联
WTKJ-7/8"-1-A01	7/8单联	WTKJ-1.5/8"-3-A01	13/8三联
WTKJ-7/8"-1-B01	7/8单联	WTKJ-1.5/8"-3-B01	13/8三联
WTKJ-7/8"-1-C01	7/8单联	WTKJ-1.5/8"-3-C01	13/8三联



D.2-1 穿芯型馈线卡具

馈线窗

馈线卡

Feeder Card

馈线卡

馈线接地卡

接地铜排

避雷器支架

Material Type 物料规格	Material Name 物料名称
WTKQ-1/2"-1-A01	1/2单联
WTKQ-1/2"-1-B01	1/2单联
WTKQ-1/2"-1-C01	1/2单联
WTKQ-1/2"-2-A01	1/2双联
WTKQ-1/2"-2-B01	1/2双联
WTKQ-1/2"-2-C01	1/2双联
WTKQ-1/2"-3-A01	1/2三联
WTKQ-1/2"-3-B01	1/2三联
WTKQ-1/2"-3-C01	1/2三联
WTKQ-1/4"-1-B01	1/4单联
WTKQ-1/4"-2-B01	1/4双联
WTKQ-1/4"-3-B01	1/4三联
WTKQ-3/8"-1-A01	3/8单联
WTKQ-3/8"-1-B01	3/8单联
WTKQ-3/8"-1-C01	3/8单联
WTKQ-3/8"-2-A01	3/8双联
WTKQ-3/8"-2-B01	3/8双联
WTKQ-3/8"-2-C01	3/8双联
WTKQ-3/8"-3-A01	3/8三联
WTKQ-3/8"-3-B01	3/8三联
WTKQ-3/8"-3-C01	3/8三联
WTKQ-7/8"-1-A01	7/8单联
WTKQ-7/8"-1-B01	7/8单联
WTKQ-7/8"-1-C01	7/8单联

Material Type 物料规格	Material Name 物料名称
WTKQ-7/8"-2-A01	7/8双联
WTKQ-7/8"-2-B01	7/8双联
WTKQ-7/8"-2-C01	7/8双联
WTKQ-7/8"-3-A01	7/8三联
WTKQ-7/8"-3-B01	7/8三联
WTKQ-7/8"-3-C01	7/8三联
WTKQ-1.1/4"-1-A01	5/4单联
WTKQ-1.1/4"-1-B01	5/4单联
WTKQ-1.1/4"-1-C01	5/4单联
WTKQ-1.1/4"-2-A01	5/4双联
WTKQ-1.1/4"-2-B01	5/4双联
WTKQ-1.1/4"-2-C01	5/4双联
WTKQ-1.1/4"-3-A01	5/4三联
WTKQ-1.1/4"-3-B01	5/4三联
WTKQ-1.1/4"-3-C01	5/4三联
WTKQ-1.5/8"-1-A01	13/8单联
WTKQ-1.5/8"-1-B01	13/8单联
WTKQ-1.5/8"-1-C01	13/8单联
WTKQ-1.5/8"-2-A01	13/8双联
WTKQ-1.5/8"-2-B01	13/8双联
WTKQ-1.5/8"-2-C01	13/8双联
WTKQ-1.5/8"-3-A01	13/8三联
WTKQ-1.5/8"-3-B01	13/8三联
WTKQ-1.5/8"-3-C01	13/8三联



D.2-2 沿墙型馈线卡具

Material Type 物料规格	Material Name 物料名称
WTKC-1/2"-1-C01	1/2单联
WTKC-7/8"-1-C01	7/8单联
WTKC-1.1/4"-1-C01	5/4单联
WTKC-1.5/8"-1-C01	13/8单联



D.2-3 泄漏型馈线卡具

Material Type 物料规格	Material Name 物料名称
WTKJ-G-2-00-A01	1/2S双联
WTKJ-1/4"-1-00-B01	1/4单联
WTKJ-3/8"-S-A01	3/8单联双孔
WTKJ-3/8"-2S-A01	3/8双联双孔
WTKJ-3/8"-3S-C01	3/8三联双孔



D.2-4 光纤固定夹

Material Type 物料规格	Material Name 物料名称
WTKG-7/8"-1-B01	7/8单联
WTKG-7/8"-1-C01	7/8单联
WTKG-7/8"-2-A01	7/8双联
WTKG-7/8"-2-B01	7/8双联
WTKG-7/8"-2-C01	7/8双联
WTKG-7/8"-3-B01	7/8三联
WTKG-7/8"-3-C01	7/8三联



D.2-5 挂钩型馈线卡具

馈线窗

馈线卡

馈线接地卡

接地铜排

避雷器支架

Feeder Grounding

馈线接地卡

馈线接地卡用于保护天馈线和机房设备防止雷击引起的设备破坏，可用于馈线的常规接地，其主要材质是不锈钢、紫铜，铜壳及铜鼻子表面经镀银或镀锡处理，电接触性能极佳，接触电阻、接地电阻等均符合有关要求。

Feeder grounding kit is used for the protection of the antenna feeder and machine room equipment to prevent equipment damage caused by lightning. It can be used for conventional grounding of feeders, and its main material is stainless steel and copper. Copper shell and copper nose surface are treated with silver or tin, with good electrical contact properties, excellent contact resistance, grounding resistance.

技术参数

Technical Data

可用标准	Applicable Standards	
温度范围	Temperature Range	-55°C - +85°C
电气性能	Electrical Data	
耐冲击电流	Impact Resistance Current	≥ 70 KA
绝缘电阻	Insulation Resistance	≥ 5 GΩ
接触电阻	Contact Resistance	≤ 5 mΩ
线缆拉脱力	Pull to take off dint	≥ 600 N

免胶式接地卡

名称	Name	材料	Material
橡胶组件	Rubber discreteness	三元乙丙橡胶	EPDM
骨架	Framework	不锈钢	Stainless Steel
紧固件	Fastening	不锈钢	Stainless Stee/Passivationl
胶泥	Gum Mire	3M2166	3M2166
导电带	Contact Net	铜丝编织网	Brass Wires Weave Net/Tin
线鼻子	Line Beezer	T2紫铜管	T2 Red Copper Canal/Tin
接地电缆	Earth Cable	16-35mm ² 铜芯	Cuprum Core
热缩管	Pyrocondensation Canal	聚烯烃+热熔胶	Polyolefin Plastics

铜舌式接地卡

名称	Name	材料	Material
铜舌	Copper Tongue	T2紫铜皮	T2 Red Copper Skin/Passivation
紧固件	Fastening	不锈钢	Stainless Stee/Passivationl
线鼻子	Line Beezer	T2紫铜管	T2 Red Copper Canal/Tin
接地电缆	Earth Cable	16-35mm ² 铜芯	Cuprum Core
热缩管	Pyrocondensation Canal	聚烯烃+热熔胶	Polyolefin Plastics

环扣式接地卡

名称	Name	材料	Material
铜卡	Copper Block	T2紫铜皮	T2 Red Copper Skin/Passivation
钢丝	Steel Wire	不锈钢	Stainless Steel/Passivation
紧固件	Fastening	不锈钢	Stainless Steel/Passivation
线鼻子	Line Beezer	T2紫铜管	T2 Red Copper Canal/Tin
接地电缆	Earth Cable	16-35mm ² 铜芯	Cuprum Core
热缩管	Pyrocondensation Canal	聚烯烃+热熔胶	Polyolefin Plastics

室内接地卡

名称	Name	材料	Material
支架	Bracket	不锈钢	Stainless Steel/Passivation
钢带	Metal strip	不锈钢	Stainless Steel/Passivation
紧固件	Fastening	不锈钢	Stainless Steel/Passivation
C型铜鼻子	C- copper beezer	T2紫铜管	T2 Red Copper Canal/Passivation
接地电缆	Earth Cable	16-35mm ² 铜芯	Cuprum Core
防尘盒	Dustproof Box	ABS塑料	ABS Plastic

馈线窗

馈线卡

馈线接地卡

接地铜排

避雷器支架

Feeder Grounding

馈线接地卡

Material Type	Material Name
物料规格	物料名称
WTJDM-1/2"-A01	1/2"免胶式接地卡(16普,1米)
WTJDM-3/8"-A01	3/8"免胶式接地卡(16普,1米)
WTJDM-7/8"-A01	7/8"免胶式接地卡(16普,1米)
WTJDM-1.1/4"-A01	1.1/4"免胶式接地卡(16普,1米)
WTJDM-1.5/8"-A01	1.5/8"免胶式接地卡(16普,1米)



D.3-1 免胶式接地卡

Material Type	Material Name
物料规格	物料名称
WTJDS-1/2"-A01	1/2"铜舌式接地卡(16普,1米)
WTJDS-3/8"-A01	3/8"铜舌式接地卡(16普,1米)
WTJDS-7/8"-A01	7/8"铜舌式接地卡(16普,1米)
WTJDS-1.1/4"-A01	1.1/4"铜舌式接地卡(16普,1米)
WTJDS-1.5/8"-A01	1.5/8"铜舌式接地卡(16普,1米)



D.3-2 铜舌式接地卡

Material Type	Material Name
物料规格	物料名称
WTJDK-1/2"-A01	1/2"环扣式接地卡(16普,1米)
WTJDK-3/8"-A01	3/8"环扣式接地卡(16普,1米)
WTJDK-7/8"-A01	7/8"环扣式接地卡(16普,1米)
WTJDK-1.1/4"-A01	1.1/4"环扣式接地卡(16普,1米)
WTJDK-1.5/8"-A01	1.5/8"环扣式接地卡(16普,1米)



D.3-3 环扣式接地卡

Material Type	Material Name
物料规格	物料名称
WTJDT-C3-16-A01	C3钢带式通用室内接地卡(16软,1米)



D.3-4 室内接地卡

Material Type	Material Name
物料规格	物料名称
WTJDX-16-A01	接地线16(普)1米(M8+M6)
WTJDX-25-A01	接地线25(软)1米(M8*2)
WTJDX-35-A01	接地线35(软)1米(M8*2)



D.3-5 接地线

Ground Copper Bar

接地铜排

接地铜排为设备、机架以及其它需接地的物体提供一个公共接地节点，为接地导体与连接系统中的各个金属部件建立一个等电位系统，这个等电位系统的电压几乎为零，可在发生过电流或故障时保护人员和设备的安全，横截面积足够大，保证瞬态高电流快速汇走，接地排、边角采用圆弧处理，防止尖锐的边角产生电磁辐射，它可以安装在铁塔、基站室内室外和其他任何要求接地的地方。

The grounding copper bar provides a common grounding node for equipment, machine frame and other objects required for grounding, and sets up an equipotential system for all metal parts of the grounding conductor and the connecting system, the voltage of the equipotential system is almost zero, thus it can protect the personnel and equipment in the event of overcurrent or failure, the cross-sectional area is large enough, so as to ensure the transient high current fast go away, the grounding bar, corners are made circular arc, to prevent the sharp corner from producing electromagnetic radiation, so it can be installed in the iron tower, inside or outside of the base station and any other places needing grounding.

技术参数

Technical Data

可用标准	Applicable Standards		
温度范围	Temperature Range	-55°C - +85°C	
电气性能	Electrical Data		
耐冲击电流	Impact Resistance Current	≥ 70 KA	
绝缘电阻	Insulation Resistance	≥ 5 GΩ	
接触电阻	Contact Resistance	≤ 5 mΩ	
名称	Name	材料	Material
铜板	Copper Line	T2紫铜板	T2-Purple Copper/Tin
支架	Bracket	不锈钢	Stainless Steel/Passivation
绝缘子	Insulated Body	环氧树脂	Epoxy

Material Type	Material Name
物料规格	物料名称
WTP1-250*100*8-16-D01	16孔接地铜排
WTP1-300*60*6-11-D01	11孔接地铜排
WTP1-300*80*10-16-D01	16孔接地铜排
WTP1-400*80*8-13-D01	13孔接地铜排
WTP1-400*100*10-25-D01	25孔接地铜排
WTP1-500*100*10-22-D01	22孔接地铜排



D.4-1

Arrester Bracket

避雷器支架

避雷器支架是严格按照IEC有关标准制作的产品，适用于各种类型避雷器的安装，铜排与铜导线通过浇注或螺旋连接，导电性好，接入电阻≤0.336mΩ，保证了可靠的导电性。该产品整体设计合理，用标准绝缘子配套，并装有不锈钢固定架，最后用螺栓固定于所需位置处。

避雷器支架用T2电解纯紫铜铜排，材质电阻率小，导电性好。生产中，铜排与铜导线的连接头是通过浇注工艺或螺栓连接成型，连接可靠，导电电阻小。绝缘子聚酯树脂原料，绝缘性好，强度高，所有配件都经过处理，永不生锈。

Arrester bracket is produced in strict accordance with the relevant IEC standard, used for all types of arrester installation, copper conductor and copper bar are connected by casting or screw connection, with good conductivity, access resistance ≤ 0.336 mΩ, to ensure reliable electrical conductivity. The overall design of the product is reasonable, matched with standard insulator and equipped with stainless steel bracket, and is bolted to a desired position at last. Arrester bracket adopts T2 electrolytic pure copper bar, the resistivity of the material is small, with good conductivity. During production, the connectors of copper bar and copper conductor are made by bolts or by molding or casting process, with reliable connection, small conductive resistance. Insulators are made of polyester plastic resin, with good insulation, high strength, and all the accessories have been treated, never rust.

技术参数

Technical Data

可用标准	Applicable Standards		
温度范围	Temperature Range	-40°C - +85°C	
电气性能	Electrical Data		
大气压	Pressure	70 - 106KPa	
耐冲击电流	Impact Resistance Current	≥ 70 KA	
耐工频高压	Pressure	≥ 2 KV/min	
绝缘电阻	Insulation Resistance	≥ 5 GΩ	
接触电阻	Contact Resistance	≤ 5 mΩ	
名称	Name	材料	Material
支架	Bracket	冷轧钢板	Cold Armor Plate/Dacrotized
绝缘子	Insulated Body	环氧树脂	Epoxy
紧固件	Fastening	不锈钢	Stainless Steel/Dacrotized
接地汇流排	Earth Accordant Junction Line	T2紫铜板或铝板	T2 Purple Copperplate Or Aluminium/Tin
接地电缆	Earth Cable	16mm² 铜芯	Cuprum Core

Material Type	Material Name
物料规格	物料名称
WTBTJ-T2*3-400D01	6单元避雷器托架
WTBTJ-L3*2-400-E01	6单元避雷器托架
WTBTJ-T3*3-400-D01	9单元避雷器托架
WTBTJ-L3*3-400-E01	9单元避雷器托架
WTBTJ-T3*4-400-D01	12单元避雷器托架
WTBTJ-L3*4-400-C01	12单元避雷器托架
WTBTJ-T3*6-400--D01	18单元避雷器托架
WTBTJ-L3*6-400-E01	18单元避雷器托架



D.5-1



连接有我 沟通无限
Infinite Communication And Link Between You And Me

吴通通讯始终致力于成为一流的通信连接及通信应用产品服务及系统解决方案核心供应商。

Wutong Communications has always been committed to become the core supplier of first-class communication connection and application products, services and system solutions.